

*Palo
Alto*

Vol. XLII, Number 41 ■ July 16, 2021

Weekly

www.PaloAltoOnline.com

**Bike plan faces
uphill climb**

page 5



Where your water's coming from

How diverse are cities' supplies —
and are they enough?

Page 5

Read up-to-the-minute news on PaloAltoOnline.com

- **Upfront** Parent sues schools over mask mandate
- **A&E** Music@Menlo celebrates return of live concerts
- **Eating Out** 'Zero-waste' chef serves up recipe book

Page 8

Page 21

Page 26



exceptional health care in the new normal



U.S. News & World Report recognizes Stanford Health Care among the top hospitals in the nation, based on quality and patient safety.

Stanford Health Care is ready to care for you, now and always.

We continue to adapt and adhere to the most up-to-date safety guidelines, so you can feel confident getting the care you need.

To ensure your safety, we are:

- Screening both staff and patients for COVID-19
- Requiring and providing masks for all
- Staggering visits to allow for physical distancing in common areas
- Ensuring separate screening areas for symptomatic patients
- Sanitizing exam rooms after every patient

Don't delay your care. Appointments are available at our locations across the Bay Area and remotely by video visit.

stanfordhealthcare.org/resumingcare



195 FARM ROAD, WOODSIDE



\$10,250,000 • 4 Bed • 4.5 Bath • Represented Buyer



Sean Foley
650.207.6005
DRE 00870112

3750 GROVE AVENUE, PALO ALTO



\$2,998,000 • 4 Bed • 2 Bath • julietsailaw.com



Julie Tsai Law
650.799.8888
DRE 01339682

760 WEEKS STREET, EAST PALO ALTO



\$2,888,000 • 10 unit development site



Marc H. Bryman
650.646.1150
DRE 01906976

22160 BERKELEY COURT, LOS ALTOS



\$2,298,000 • 4 Bed • 2 Bath • 22160berkeley.com



Lynn North
650.703.6437
DRE 01490039

333 BUSH ST, UNIT 3806, SAN FRANCISCO



\$2,198,000 • 2 Bed • 2 Bath



Pamela Rummage Culp
415.640.3293
DRE 00896337

445 FRANCISCO, UNIT F601, SAN FRANCISCO



\$2,198,000 • 2 Bed • 2 Bath



Pamela Rummage Culp
415.640.3293
DRE 00896337



**SOLD 355K
ABOVE ASKING PRICE!**

423 CHAUCER STREET

423Chaucer.com

5 BD, 4.5 BA | 3,858±SF | 17,368±SF LOT

SOLD FOR \$7,750,000

SR SHELLY ROBERSON

... just sold in Palo Alto



**SOLD 270K
ABOVE ASKING PRICE!**

2830 WAVERLEY STREET

2830Waverley.com

6+ BD, 3.5 BA | 3,661±SF | 8,070±SF LOT

SOLD FOR \$4,168,000

THINKING OF SELLING? Does Your Property Have the Potential to Sell Above Market Value?
Contact **SHELLY** Today To Learn How She Earned Top Dollar for her **SELLERS!**



SR SHELLY ROBERSON
REALTOR® LIC. #01143296

650.464.3797

shelly.roberson@compass.com

COMPASS

578 University Avenue
Palo Alto, CA 94301

Compass is a licensed real estate broker (01991628) in the State of California and abides by Equal Housing Opportunity laws. All material presented herein is intended for informational purposes only. All measurements, sq. ft. and school data are approximate. Buyer to verify to conduct their own investigation.

Upfront

Local news, information and analysis

South Palo Alto bike plan runs into opposition

Replacing 80 parking spots with protected bike lanes could cause problems, residents say

By Gennady Sheyner

Months after the City Council enthusiastically endorsed the creation of bikeways on a well-traveled stretch of south Palo Alto, the \$1.7 million effort has run into a tricky obstacle: opposition from

residents who don't want to lose 80 on-street parking spots for the new bike lanes.

The project includes a protected bikeway along East Meadow Drive, between Alma Street and Fabian Way, as well as bikeways

on both sides of Fabian Way. It also includes widening the existing multi-use path along Waverley Street between East Meadow and Charleston Road, along the western edge of Mitchell Park.

Most elements of the project — including the changes to the Waverley path and Fabian Way — remain broadly popular to this day. But there is a notable exception.

Dozens of residents who live

on the eastern portion of the East Meadow Drive segment have come out against the city's plan for their blocks, one that would require the removal of about 80 parking spaces to make way for protected bike lanes.

On Friday, more than 30 residents held an impromptu meeting at Ramos Park with the city's planning staff to express their concerns. Dozens also submitted

letters and testified in front of the Planning and Transportation Commission on Wednesday night to oppose the creation of the protected bikeways in their area.

Many of the project's critics suggested that the solution proposed by staff and consultants is worse than the problem, which some claimed doesn't really exist. Chuck

(continued on page 14)



Marcell Gauthier

People row up and down Lexington Reservoir in Los Gatos on July 7.

DROUGHT

How resilient is our water supply?

Drought raises questions about how diversified cities' sources are — and how much they have stored

By Sue Dremann

When it comes to supplies of water, many local cities are dependent on one far-away source: the San Francisco Regional Water System, which comes from the Sierra Nevada, mainly the Hetch Hetchy reservoir. Numerous Peninsula cities get 100% of their water from this supplier.

But the West's deepening drought and recent calls for Californians to voluntarily reduce their water use by 15% have

residents starting to wonder: Just how resilient are local water systems in the event of a long-term drought or an emergency?

Data from the Bay Area Water Supply and Conservation Agency (BAWSCA) indicates that local cities have little in the way of alternative or local sources to their imported water supply. Storage is also limited.

Some communities are better diversified than others. Mountain View and Stanford have perhaps

the greatest amount of diversity; East Palo Alto has no emergency source other than through tie-ins with surrounding cities who also rely on Hetch Hetchy supplies.

Even the well-diversified supplier Valley Water, also known as Santa Clara Valley Water District, is dependent on imported sources of water from the San Francisco Bay-San Joaquin Delta and Hetch Hetchy supplies.

Groundwater, local storage and recycled supplies would

not be enough to offset a loss of water from these life-sustaining sources if they run dry. Valley Water's current concerns perhaps illustrate just how vulnerable the Bay Area's water supply can be. Anderson reservoir, the largest in Valley Water's storage system, has been reduced to nearly a puddle since federal authorities mandated a seismic retrofit that will take a decade to complete. The water district's other major water supplies from the San Francisco Bay-San Joaquin Delta have also been vastly reduced by state and federal authorities to provide additional needed water for wildlife and natural fisheries.

California has experienced multiple, extended periods of

(continued on page 12)

UTILITIES

City eyes \$20M switch to 'smart meters'

Utilities commission backs funds for advanced metering infrastructure

By Gennady Sheyner

After eight years of waver- ing, debating and plan- ning, Palo Alto is preparing to begin its switch to "smart meters," a \$20 million move that city leaders believe will make local electric, gas and water utilities more efficient and reliable.

The city is set to approve contracts with three companies that the Utilities Department will work with what's known as "advanced metering infrastructure," a system in which meters and data management tools allow communication between customers and utilities.

A report from the Utilities Department calls advanced metering infrastructure (AMI) "a foundational technology that is becoming a standard in the utilities industry." The technology, the report notes, helps improve customer experience, strengthens reliability of the system and enables the community to meet its sustainability goals. It could, for example, provide customers with real-time energy use data and help them find the optimal time to charge their vehicles or use their appliances. It could also alert customers about water leaks.

To make the switch, the city will pay about \$12.7 million to Sensus, the firm that the city selected through its bidding process to replace all 30,326 existing electric meters with its own "smart" meters; up to \$4.7 million to Utilities

(continued on page 11)



OUR TEAM IS IN MOTION FOR YOU

DELEON REALTY, INC.

Michael Repka | CEO & Managing Broker | DRE #01854880
650.900.7000 | Info@deleonrealty.com
www.deleonrealty.com | DRE #01903224

Submit Nomination for El Camino Hospital Board Finance Committee

THE EL CAMINO HOSPITAL BOARD OF DIRECTORS

is seeking individual(s) interested in serving as a member of its **FINANCE COMMITTEE**. Candidates will have demonstrated strategic financial effectiveness as a Financial Officer or General Manager. Experience with evolving markets and technologies applicable to healthcare, financial services, industry, real estate or other complex financial environments would be highly valued. The El Camino Hospital Board seeks and values diverse and inclusive membership.

Submissions due by **July 23, 2021**.

To learn about additional qualifications, or to nominate someone you know, please email nominations@elcaminohealth.org or visit elcaminohealth.org/board-finance.



 **El Camino Health**
elcaminohealth.org

450 Cambridge Ave., Palo Alto, CA 94306
(650) 326-8210

PUBLISHER

William S. Johnson (223-6505)

EDITORIAL

Editor Jocelyn Dong (223-6514)
Associate Editor Linda Taaffe (223-6511)
Sports Editor Rick Eymers (223-6516)
Assistant Sports Editor Glenn Reeves (223-6521)
Arts & Entertainment Editor Karla Kane (223-6517)
Home & Real Estate Editor Heather Zimmerman (223-6515)
Express & Digital Editor Jamey Padojino (223-6524)
Staff Writers Sue Dremann (223-6518), Gennady Sheyner (223-6513)
Embarcadero Media Staff Writers Kate Bradshaw (223-6536), Kevin Forestieri (223-6535), Angela Swartz (223-6529)
Chief Visual Journalist Magali Gauthier (223-6530)
Visual Journalist Intern Daniela Beltran B.
Editorial Assistant/Intern Coordinator Lloyd Lee (223-6526)

Contributors Chrissi Angeles, Mike Berry, Carol Blitzer, Peter Canavese, Edward Gerard Fike, Yoshi Kato, Chris Kenrick, Jack McKinnon, Sheryl Nonnenberg, John Orr, Monica Schreiber, Jay Thorwaldson

ADVERTISING

Vice President Sales & Marketing Tom Zahiralis (223-6570)
Multimedia Advertising Sales Elaine Ogden (223-6572), Connie Jo Cotton (223-6571)
Real Estate Advertising Sales Neal Fine (223-6583)
Legal Advertising Alicia Santillan (223-6578)

ADVERTISING SERVICES

Advertising Services Manager Kevin Legarda (223-6597)
Sales & Production Coordinator Diane Martin (223-6584)

DESIGN

Design & Production Manager Kristin Brown (223-6562)
Senior Designers Linda Atilano, Paul Llewellyn
Designers Kevin Legnon, Amy Levine, Douglas Young

BUSINESS

Assistant Business Manager Gwen Fischer (223-6575)
Business Associates Nico Navarrete (223-6582), Suzanne Ogawa (223-6543)

ADMINISTRATION

Courier Ruben Espinoza

EMBARCADERO MEDIA

President William S. Johnson (223-6505)
Vice President Michael I. Naar (223-6540)
Vice President & CFO Peter Beller (223-6545)
Vice President Sales & Marketing Tom Zahiralis (223-6570)
Director, Information Technology & Webmaster Frank A. Bravo (223-6551)
Director of Marketing and Audience Development Emily Freeman (223-6560)
Major Accounts Sales Manager Connie Jo Cotton (223-6571)
Circulation Assistant Alicia Santillan
Computer System Associates Chris Planessi, Mike Schmidt

The Palo Alto Weekly (ISSN 0199-1159) is published every Friday by Embarcadero Media, 450 Cambridge Ave., Palo Alto, CA 94306, (650) 326-8210. Periodicals postage paid at Palo Alto, CA and additional mailing offices. Adjudicated a newspaper of general circulation for Santa Clara County. The Palo Alto Weekly is delivered to homes in Palo Alto, Menlo Park, Atherton, Portola Valley, East Palo Alto, to faculty and staff households on the Stanford campus and to portions of Los Altos Hills. POSTMASTER: Send address changes to Palo Alto Weekly, 450 Cambridge Ave., Palo Alto, CA 94306. ©2021 by Embarcadero Media. All rights reserved. Reproduction without permission is strictly prohibited. The Palo Alto Weekly is available on the Internet via Palo Alto Online at: www.PaloAltoOnline.com

Our email addresses are: editor@paweeekly.com, letters@paweeekly.com, digitalads@paweeekly.com, ads@paweeekly.com

Missed delivery or start/stop your paper? Email circulation@paweeekly.com. You may also subscribe online at PaloAltoOnline.com. Subscriptions are \$120/yr.

SUPPORT LOCAL JOURNALISM

Become a Paid Subscriber for as low as \$5 per month

Sign up online at www.PaloAltoOnline.com/join

QUOTE OF THE WEEK



They're not going to be happy right now.



— **Keith Reckdahl**, Palo Alto Parks and Recreation commissioner, on bicyclists losing access to Adobe Creek Loop Trail. See story on page 8.

Around Town



Courtesy Thiebaut Method

ACHIEVING A GOAL ... There's nothing quite like the exhilaration of playing soccer, which recently brought professional players to the Euro 2020 tournament that Italy won on July 11. Third grader **Jeffren Peraza** helped gather local lovers of the sport to East Palo Alto on July 10 for a free soccer class organized through **Thiebaut Method**, a nonprofit that works with low-income youth. The event brought about 50 people to **Rich May Memorial Field** for an afternoon that demonstrated soccer fundamentals and the benefits of physical activity. In a video ahead of the class, Jeffren showcased the skills attendees would gain at the class, including ball taps, kicks, passes and dribbling obstacles. He also made connections with businesses and colleges in the area. **The Willow Soccer** in Menlo Park and **Pro Soccer** in Redwood City came through with equipment donations. Members of **Stanford Women's Soccer**, **San Jose State University Men's Soccer**, **Cañada College Men's Soccer**, **The Reikes Center** and **East Palo Alto United Soccer Club** came out to help teach the class. "I did this because (soccer's) my passion and I like it, and I wish everybody else liked it, too," Jeffren said in a post-event video.

LET THE RECORD SHOW ... Judge **Charles E. Wilson II** of East Palo Alto and Palo Alto native Justice **Alison Tucher** have been nominated to the **California Court of Appeal**. Gov. **Gavin Newsom** announced on July 9. Wilson, 46, has been nominated as an associate justice of the California Sixth District Court of Appeal. Wilson has served as a judge in the Santa Clara County Superior Court since 2014. If approved for the appeals court position, he would replace Justice **Eugene M. Premo**, who has retired. The position requires a review by the state bar's Commission on Judicial Nominees Evaluation and

confirmation by the Commission on Judicial Appointments. Tucher, 58, now of Berkeley, has been nominated to serve as presiding justice of the First District Court of Appeal, Division Three, to fill a vacancy created by the retirement of Justice Peter J. Siggins. She has served as an associate justice of the First District Court of Appeal, Division Four, since 2018. As an attorney, Tucher helped exonerate East Palo Alto resident **Rick Walker** in June, who spent 12 years in prison for a murder he didn't commit.

KNOWLEDGE IS POWER ... The **SLAC National Accelerator Laboratory** operated by Stanford University welcomed Secretary of Energy **Jennifer Granholm**, albeit virtually, on July 8. For two hours over Zoom, she connected with staff and got a look at the research facilities in Menlo Park. Granholm also went on a tour of the lab's Linac Coherent Light Source X-ray laser, visited the Matter in Extreme Conditions experimental station that's used to test high temperatures and pressures in materials and viewed the world's largest digital camera for astronomy, according to a SLAC press release. Staff also gave presentations on machine learning, quantum technology and climate science. She discussed challenges with SLAC and Stanford researchers, such as "the sustainable generation of energy and products without depleting limited resources or accelerating climate change," the release states. "The scientists and researchers at SLAC are a big reason why I call the Department of Energy 'America's Solutions Department,'" Granholm said in her concluding remarks shared in the press release. "They're deepening our understanding of how our world operates at the atomic level, unlocking new possibilities for better microchips and medicine and more." ■

News Digest

PAMF faces 'racist workplace' lawsuit

An eye surgeon who was once the highest-ranking Black physician in a leadership role at Palo Alto Medical Foundation has filed a lawsuit against the medical provider and its parent company, Sutter Health, for allegedly violating California law by maintaining a racially toxic workplace, according to a civil complaint filed last month in San Francisco County Superior Court.

Dr. Omondi Nyong'o, who has worked for Sutter Health for 13 years, is a pediatric surgical ophthalmologist and medical director of philanthropy. He was the first and only Black physician to chair any department within the Palo Alto Medical Foundation region of Sutter Health, according to the June 22 complaint, which Nyong'o discussed in a Medium post.

For years, he has been subject to a pattern of racial discrimination, including pay and promotion discrimination, demotion, biased reviews, heightened scrutiny and racial harassment, different standards of behavior and unfair discipline, according to the lawsuit.

Nyong'o alleges violations of the state's Fair Employment and Housing Act, Fair Pay Act, Health and Safety Code and Unfair Competition Law, in addition to a breach of contract and intentional infliction of emotional distress. The lawsuit names Sutter Health, Palo Alto Medical Foundation and the Palo Alto Foundation Medical Group in Los Altos, as defendants.

Reached by email on Tuesday, a Sutter Health spokesperson said the organization "takes these allegations very seriously. We deny having taken or participated in any discriminatory or retaliatory conduct against Dr. Nyong'o or any of our physician partners or our own employees." ■

— Sue Dremann

Public defender runs for district attorney

Sajid Khan, a Santa Clara County deputy public defender and criminal justice reform advocate, is running for county district attorney, he announced at a San Jose rally on Sunday. He is challenging Jeff Rosen, who has held the position since 2011.

Khan said in an announcement that he would run as a "true progressive" and would focus on rooting out systemic racism, shrinking mass criminalization and addressing the root causes of crime. He has been a public defender serving Santa Clara County for 13 years and has fought for people's constitutional rights and against systemic racism and mass incarceration, according to the announcement.

He was born in San Jose to Muslim immigrants from Madras, India. His mother worked as a laboratory scientist at O'Connor Hospital in San Jose and his late father was a physicist in the semiconductor industry who established a mosque and later a school, both in Santa Clara.

Retired Santa Clara County Judge LaDoris Cordell and the Real Justice PAC announced they are endorsing Khan. Real Justice PAC works to elect reform-minded prosecutors and focuses on ending discriminatory policing, eliminating money bail and rolling back practices leading to mass incarceration. ■

— Sue Dremann

Light-rail reopening delayed past July

Officials from the Santa Clara Valley Transportation Authority announced on Thursday that it won't restart the agency's light-rail service anytime this month.

The light-rail trains have sat idle in downtown San Jose since May 26, when a disgruntled VTA employee killed nine of his colleagues before taking his own life at the VTA Guadalupe light-rail yard, which has housed light-rail maintenance service and equipment since 1987.

In addition to the trauma inflicted on VTA employees who witnessed the mass shooting and the loss of co-workers and friends, VTA officials said the shooting caused damage to buildings, equipment and computers necessary to the service.

Getting the light-rail service back up and running is a considerable task, agency officials said.

"There are two critical elements to this operation, the infrastructure side, and the people side," said Robert Daniels, VTA superintendent of bus operations. "Our timeline features separate but parallel tracks."

He said staff cannot return without a new place for them to work because of the equipment damage but also trauma.

And light-rail trains cannot resume service if there aren't staff there to complete inspections, Daniels said.

VTA has released a six-phase timeline with estimated time periods for how long each phase is expected to last. If the days for each phase are added together — for example, if the number of days projected for each phase begins only once the previous phase is completed — the timeline would have trains resuming passenger service between 24 and 50 days from now. ■

—Bay City News Service



CALLING ALL
CALIFORNIANS

HIBERNATION IS FINALLY OVER.
HEAD TO THE BEACH.
SHOP LOCAL. GO WINE TASTING.
GET SOME R&R
IN THE NAME
OF RECOVERY.

SUPPORT YOUR STATE BY VACATIONING HERE.

California®
dream big

EDUCATION

Parent sues Palo Alto Unified for barring student from attending class without a mask

'I'm not challenging the mask mandate,' says father, who is also the attorney in the case

By Lloyd Lee

The father of a rising senior at Palo Alto High School is suing the Palo Alto Unified School District after his son was prohibited from attending an in-person summer class without a mask.

The father, whose name is being withheld to protect the identity of the underage student and who also is the attorney in the case, claims that his son cannot wear a mask because he is "unable to wear a face mask safely" and a "speech/communication disability ... makes it difficult for him to pronounce certain letters and sounds," according to the lawsuit that was filed on July 7 in Santa Clara County Superior Court.

The suit claims that the student will suffer damages from being barred from class because he will not be able to graduate on time if he is absent for more than three days. According to court documents, the student was enrolled in the district's summer school credit recovery course that is two-and-a-half weeks long and prohibits students from missing more than

three days to receive credit.

According to court documents, the student attempted to attend class without a mask on the first day of summer school at Gunn High on July 6 but was promptly told to go to the office. The father, who was waiting at the school parking lot, received a text message about the incident and met with Courtney Carlomagno, principal of Gunn's summer program. Carlomagno informed the father that this son would not be allowed in class without a mask, and he subsequently missed the first day of summer school.

The father also spoke with Mike Jacobs, the district safety manager who is listed as another defendant in the case, over the phone. Jacobs later told the father in an email that without "proof of a medical condition or disability," the student cannot not be exempt from wearing a mask.

In an interview, the father argued that the state and Centers for Disease Control and Prevention guidelines don't stipulate that written or documented proof of a

disability is required to receive an exemption. He also said that the school's policy on written documentation was never made explicitly clear beforehand.

"I don't know where this is coming from, and I never received the policy," the father said. "The first thing I asked was, 'Please send me your written policies on this,' and they didn't have any of their own. They said it was fluid, it's changing."

The district and school officials refused to provide alternatives to work through the issue, according to the lawsuit.

According to the father, his son continued to submit homework assignments for the course in the hopes that the situation would be ironed out and the student would be able to receive credit for the course. So far, the teacher has not graded the student's assignments and no longer responds to his emails, he said.

In email exchanges between the student's father and school officials that began on June 28, which are documented in the suit,

the father sought a face-mask exemption for his son, citing guidelines from the state Department of Public Health and CDC, since he was told that online courses were not offered for the summer.

The father told Jacobs that his son cannot wear a face mask safely because he has a speech and communication disability that is made more acute when wearing a face mask. Evidence of his disability was "noted in recent high school report card comments from his teachers."

On July 3, Jacobs followed up with the father in an email, stating that the student "did not have a medically related reason on file that would indicate a need for a face covering exemption."

In addition, Jacobs cited the district's special education department, which acknowledged that the student did receive special education services through the Individualized Education Program (IEP), but was removed from the program after an assessment report from February 2018 that stated he had made "tremendous

progress." Based on teacher feedback and standardized testing, the special education department said he was no longer eligible to be considered a student with a speech-language impairment and no longer needed speech-language therapy.

"It was reported that (the student's) overall speech remained mostly accurate and 95-100% intelligible across all school contexts," the email from Jacobs stated. "His teachers agreed that neither they nor his classmates had difficulty understanding him."

Although the assessment report noted that the student's voice could be "low at times and/or he may occasionally speak too quickly," that did not interfere significantly with communication. Because of this, a mask exemption was not offered to the student, Jacobs wrote.

The father argues in the suit that Jacobs did not address his son's inability to wear a mask safely or recent comments teachers made after he was removed from the speech program.

The father told the Weekly that his son was in the IEP from second to eighth grades for "speech-language impairments." During his freshman and sophomore years in fall 2018 to spring 2020, the student still received comments on his report cards that said it was difficult to understand him

(continued on page 13)

ENVIRONMENT

New \$40M tidal gate will combat sea level rise

Water district readies to replace existing Baylands structure

By Gennady Sheyner

Seeking to regulate water flow at local creeks and bolster protection from sea level rise, Valley Water is setting the stage for a four-year construction project in the Palo Alto Baylands that is expected to cost close to \$40 million and that will temporarily close a popular trail.

The project will replace a structure that was installed in 1957 east of the Palo Alto Municipal Airport and the Baylands Nature Preserve. The 16-gate structure along the Adobe Creek Loop trail stores floodwater in the Palo Alto Flood Basin and releases it into the bay when water levels rise above the bay's tidal elevation. When water surface in the bay is higher than in the basin, the gates are shut to prevent the Baylands from getting inundated and to protect U.S. Highway 101 and surrounding parcels.

Valley Water, a water agency formerly known as the Santa Clara Valley Water District, is still in the process of acquiring all the needed permits for the construction project. But if all goes as planned, the agency will begin work on constructing a new

levee for the structure possibly as early as November, according to Robert Yamane, an associate civil engineer with Valley Water who is managing the project.

The district's contractor would then begin constructing the 132-foot tide-gate structure in fall 2022, with the goal of completing it in the fall or winter of 2025, according to a timeline that Valley Water presented to Palo Alto's Parks and Recreation Commission on June 22.

In recent years, the existing structure at the north end of the flood basin has been showing signs of wear and tear, with fragments of concrete breaking off, marine growth covering its gates and corrosion damaging its concrete steel reinforcement, according to a Valley Water study.

While a 2017 assessment by structural engineers suggested that minor upgrades to the structure may suffice to keep it fully functional for the next few years, a subsequent inspection that the district commissioned the following year recommended complete replacement.

"We want to maintain or provide



Valley Water is preparing to replace the tide-gate structure along the Adobe Loop Trail in the Palo Alto Baylands.

better level of service for flood protection for Matadero, Barron and Adobe creeks, as well as to protect parcels and Highway 101 that could have coastal flooding if the existing structure were to completely fail," Yamane said at the meeting, shortly before the parks commission voted unanimously to support a park-improvement ordinance for the replacement of the tide-gate structure.

The new structure will include 15 "passive" gates that rely on gravity to regulate water levels and one motorized sluice gate to manage water levels and maintain water quality in the flood basin. Water level sensors and a SCADA (supervisory control and data acquisition) system will improve sluice gate flexibility and efficiency and enable it to be operated remotely.

While the district has yet to determine the final costs of the project, Yamane pegged the price

tag at about \$39 million, which includes staff work and the repairs that the district made in 2017. Some of the funding is expected to come from Valley Water's Watersheds and Stream Stewardship Fund (known as Fund 12), though the district is also hoping to obtain funding through Proposition 68, a bond that state voters passed in 2018 to support parks and water projects, according to Valley Water's planning study.

Palo Alto is also expected to contribute some funding, though the exact amount remains undetermined.

The sensitive nature of the Baylands habitat adds to the project's costs and construction challenges. Work will be limited to five months per year to avoid interfering with the breeding season of the California Ridgway's rail, an endangered species. This requires contractors to move their equipment in and out of the area every

year until the project is complete.

"It's the multiyear construction that really drives up the cost," Yamane said.

He also noted that the district can't remove the current gate until the new one is in place.

"A large amount of water can come in if we have a 100-year storm, so we cannot cut off the existing structure until the new structure is built and put into service," he said.

The parks commission unanimously supported moving ahead with the replacement. Its biggest concern was the temporary loss of access to Adobe Creek Loop Trail, a popular loop for pedestrians and bicyclists. Commissioner Keith Reckdahl was one of several commissioners who urged Valley Water and city staff to make sure that the materials used in the new trail can accommodate bicyclists, including those using road bikes.

"They're not going to be happy right now because they're losing all these seasons, but that's just something we'll have to do," Reckdahl said. "I'm really interested in making the surface usable for road bikes because it is heavily used by road bikes."

Reckdahl also urged Valley Water to do ample public outreach so that Baylands visitors aren't surprised by construction.

"When something is coming like this, people take it better when they know it's coming," he said. ■

Email Staff Writer Gennady Sheyner at gshyner@pawebly.com.

SOCIAL JUSTICE

How local food systems are adjusting to a changing world

Groups join together to tackle food injustice by starting new programs

By Kate Bradshaw

On March 6, 2020, just 10 days before the COVID-19 pandemic triggered California's shelter-in-place order and upended the world as we knew it, the Environmental Justice and the Common Good initiative convened a workshop with about 38 groups from public health, the community and local farms to discuss food justice locally.

There, where handshakes were swapped for elbow bumps and a buffet lunch became a bagged one, the event planted the seeds for connections and relationships between organizations that would flourish through a disruptive year and grow into what's now known as the South Bay Food Justice Collaborative, according to Christopher Bacon, associate professor of environmental studies at Santa Clara University. Bacon co-founded the Environmental Justice and the Common Good Initiative at the university, which focuses on doing research that engages the community on pressing topics related to environmental justice.

The event, which included the University of California

Cooperative Extension and community-based food justice groups like Fresh Approach, La Mesa Verde, Valle Verde and Veggielution, was about the "last in-person event that happened on our campus before the lockdown started," Bacon said.

Members of the collaborative have continued to meet every two weeks, and it hasn't been led by any particular group or entity, he said. Partly because of that, he reasoned, organizations let their guards down, and the competition that often builds up between nonprofits, particularly those forced to battle over too little funding from too few sources, dissolved in the face of the regional hunger crisis. The regular meetings enabled the groups to network and start their own collaborations.

As communities emerge from the pandemic, local thought leaders like Bacon are asking whether this is a turning point that could trigger a revolution that changes local food systems for the better, or whether the hazards that farms face — not just in recovering from the pandemic but from

the looming impacts of climate change — pose an existential threat.

It's a salient question not just for farmers and those in the food industry but eaters, too, especially as the current drought makes headlines and dry conditions worsen the likelihood of devastating fire seasons to come.

Food aid on wheels

An innovative program that has developed during the pandemic is a partnership between the Silicon Valley Bicycle Coalition and Veggielution, an urban farm in San Jose.

Funded through a grant from the Santa Clara Valley Open Space Authority, cyclist volunteers from the bicycle coalition deliver produce boxes from Veggielution to families in east San Jose who aren't able to pick up the food boxes themselves.

Veggielution was initially part of the federal Farmers to Families food box program, but when that federal contract ended, funding through the city of San Jose allowed it to continue serving local



Courtesy Silicon Valley Bicycle Coalition

A volunteer with the Silicon Valley Bicycle Coalition loads boxes of food onto a bicycle for delivery to households in San Jose on May 1. The program is a partnership with urban farm Veggielution and other local farms. Courtesy Silicon Valley Bicycle Coalition.

families. The program started with just 40 families getting farm boxes but expanded to 250, according to Emily Schwing, public affairs director at Veggielution. With the additional boxes, the program partnered with a number of other local farms, including Spade & Plow, an organic farm in the Santa Clara Valley, to supply the larger volumes of produce needed.

Situated inside the Emma Prusch Farm Park in San Jose's Mayfair neighborhood, the Veggielution farm sits in the shadows of an overpass, a colorful and friendly oasis with picnic tables, peacocks, roosters and flowers.

The expansion by the bicycle coalition into a community it's not as familiar with triggered

coalition leaders to reach out to leaders focusing on diversity, equity and inclusion, said the coalition's executive director, Shiloh Ballard, in a blog post. Without being sensitive to the dynamics, it might look like a "white savior" situation, with mostly white cyclists bringing food to residents in a neighborhood where about 70% of people are Latino and about 22% are Asian or Pacific Islander.

One way they are working to build more egalitarian relationships within the community was to invite nonprofit leaders from east San Jose to join the cyclists and encourage mutual exchanges of information, Ballard said.

And while the program isn't

(continued on page 13)

OPEN SATURDAY & SUNDAY | 1:30 - 4:30PM
1122 Tahoe Lane PALO ALTO



Gorgeous 3 BR Contemporary Townhome in South Palo Alto

- Light-filled contemporary townhome in Sterling Park community, built in 2010 by Classic Communities
- 3 bedrooms, 3.5 bathrooms, approximately 1,715 sq. ft.
- All bedrooms have en suite baths, and half-bath on main level
- Chef's kitchen with island, granite countertops, and stainless steel appliances
- Living room has 20-foot ceilings and a wall of windows
- Ground-floor bedroom suite perfect for home office

- Balcony and front patio for outdoor living
- Attached 2-car garage
- 2 community parks, clubhouse, low HOA fee
- Fabulous location minutes to shops, parks, tech centers, and trails
- Acclaimed Palo Alto schools

Offered at \$1,948,000 | www.1122Tahoe.com



Tamara Pulsts

DRE# 01914972

(650) 847-0432

tamara@tamarapulsts.com

www.tamarapulsts.com

COMPASS

Compass is the brand name used for services provided by one or more of the Compass group of subsidiary companies. Compass is a real estate broker licensed by the State of California and abides by Equal Housing Opportunity laws. License Number 01079009. All material presented herein is intended for informational purposes only and is compiled from sources deemed reliable but has not been verified. Changes in price, condition, sale or withdrawal may be made without notice. No statement is made as to accuracy of any description. All measurements and square footage are approximate.

HEALTH CARE

Hospitals clash with Anthem Blue Cross over health care prices

El Camino Health severs ties with country's second largest health insurer

By Kevin Forestieri

El Camino Health terminated its contract with Anthem Blue Cross last month over price disputes, suddenly putting the hospital out of network for those covered by the country's second-largest health insurer.

But it's not the first time and it's unlikely to be the last, as many Bay Area hospitals are finding it tough to live with Anthem's price-cutting tactics.

Rising health care costs are at the heart of these clashes, which are happening with surprising regularity. El Camino and Stanford Health Care have both temporarily dropped Anthem at least three times over the last decade, along with MarinHealth last year

and Sutter Health in 2019.

The story is almost always the same: The hospitals accuse Anthem of penny pinching and paying less for services than other insurers, while Anthem describes health care costs in Northern California as unreasonably high and partly to blame for the country's high cost for health care.

These disputes rarely happen between local hospitals and other health insurers.

El Camino Health officials said in a statement that Anthem's payment terms have been "well below" all other insurance companies, despite turning a massive \$1.7 billion profit for the first quarter of this year. Hospitals, meanwhile,

have seen costs increase during the COVID-19 pandemic, though El Camino's finances have swiftly bounced back.

"We are disappointed that Anthem was unable to acknowledge the vital role El Camino Health has played in treating their members with the highest quality care during these difficult times," El Camino said in the statement.

Anthem, for its part, says it is offering year-over-year rate increases — just not enough to satisfy El Camino's demands — and that any price hike would harm customers and local employers who pay for health insurance plans.

"It's disappointing that El Camino would choose to terminate its hospital contract with us and then demand excessive rate increases," Anthem said. "The increases El Camino has demanded would result in higher premiums, deductibles and copays for employers and families."

Hospitals across the U.S. have quarreled in recent years with the country's two largest insurers, Anthem and United Healthcare, over controversial policies designed to save money. Anthem for years has been denying coverage for emergency services at hospitals if it decides the symptoms and conditions don't warrant emergency-level care, but it makes that determination after the fact. Doing so appears to violate a 1997 federal law, which requires that the need for emergency services be evaluated based on what a regular person deems an emergency, according to the American Hospital Association (AHA).

Anthem said this policy was never rolled out in California.

In a letter to Congress in October, the AHA warned that Anthem is using this as a blunt tool to save money and pass costs onto hospitals and patients, even during the midst of a public health crisis.

"It is unacceptable to discourage anyone from seeking care they believe they need, but it is absolutely unconscionable to do



El Camino Health, which has its campus in Mountain View, is in a dispute with Anthem over insurance rates.

so during a public health crisis," the AHA wrote in the letter. "Anthem, for example, has lobbied to expand policies that would discourage some of the most vulnerable residents from obtaining emergency medical care in public programs, and, even in the midst of COVID-19, it has not changed course."

Hospitals have a vested interest in denied claims. Because the costs are frequently high and patients often struggle to pay for uncovered care, oftentimes the amount owed must be written off, become a "bad debt" and a financial loss. At El Camino, for example, the hospital lost more than \$60 million during the 2019-20 fiscal year for unreimbursed and subsidized health services.

Around the same time as Anthem's controversial emergency care policy began, the company also announced it would no longer cover outpatient imaging services at hospitals, instead diverting patients to free-standing imaging centers. MRIs and CT scans can be a big source of hospital revenue but also tend to cost more, and the policy to no longer cover the services further strained the relationship between hospitals and insurance companies.

Adding to the animosity, these kinds of charges are reportedly enacted mid-contract, shifting the rules on hospitals after they've inked an agreement with insurance companies.

Anthem justifies its hard negotiating stance by pointing out that health care costs are sky high in northern California, and that El Camino is no exception. The insurer cited data that an average hip replacement costs an average of \$75,000 at El Camino,

compared with \$29,000 statewide, while a colonoscopy costs \$8,700 compared with \$4,000. El Camino did not dispute the numbers but said the comparisons are dishonest. Carlos Bohorquez, El Camino's chief financial officer, said health care costs are higher in the Bay Area and subject to a higher rate of inflation — a rate that Anthem has refused to keep up with in negotiations to date.

"Indiana-based Anthem has cherry-picked statewide averages, which include much lower-cost areas of the state to provide a disingenuous comparison and is not an accurate point of reference," Bohorquez said.

Anthem representatives are quick to point out that the company is not free to pocket all of its revenue from premiums, due to state requirements that at least 80% to 85% go to pay for health services. But the company is still posting record-breaking profits — Bohorquez said Anthem forked over \$277 million to shareholders in June through a quarterly cash dividend payment, close to 19% higher than the prior year.

"The dividend payment represents funds that do not go toward any health care service and illustrates the lucrative nature of Anthem's business model as a middleman — paying health care providers less, charging members more and pulling profits out of the health care economy to pay shareholders," he said.

The two parties say they are still working to negotiate a new agreement, but in the meantime El Camino will no longer be a part of the Anthem Blue Cross network. Enrollees received a letter from Anthem suggesting that customers go to alternative sites for care, including Stanford, Good Samaritan in San Jose, Sequoia Hospital in Redwood City and Santa Clara Valley Medical Center. Patients with pressing health care needs are eligible for "continued" care and will be allowed to stay at El Camino as an in-network option, which encompasses cancer treatment, pregnancy and serious chronic conditions.

Any updates, along with information on continued care, will be available on El Camino's website. Past disputes have been resolved in three to six months. ■

Email Staff Writer Kevin Forestieri at kforestieri@mv-voice.com.

Avenidas Rides Again!

Door to Door Program restarts rides in July!



You can turn to us once again to safely drive you to:

- ✓ Medical / Dental appointments
- ✓ Hair salons
- ✓ Stores
- ✓ Physical therapy sessions
- ✓ Social outings with friends
- ✓ Other

Note: Volunteer drivers and Lyft drivers follow government protocol for ridesharing and contactless delivery to protect everyone involved.

To book your next ride with us, simply call (650) 289-5411 or email rides@avenidas.org

Let's get back on the road again!



Avenidas
Re-Inventing Aging

www.avenidas.org

CityView

A round-up of Palo Alto government action this week

City Council

The council did not meet this week.

Planning and Transportation Commission (July 14)

Bicycles: The commission voted to recommend approving proposed bike amenities on East Meadow Drive and Fabian Way, as well as the expansion and smoothing out the Waverley multi-use path. The commission also supported exploring ways to minimize the parking impacts of adding protected bikeways on East Meadow, east of Middlefield Road. **Yes:** Alcheck, Chang, Hechtman, Lauing, Summa, Templeton **Recused:** Roohparvar

Meters

(continued from page 5)

Partners of America, a Sensus subcontractor, for installation services; and \$1.3 million to Smart Works for data management.

It will also require a shake-up in the Utilities Department, where seven meter-reader positions will become obsolete. The report notes that the city will make “best efforts” to train and reassign the staff members to new roles once the new technology is adopted. At the same time, the city is preparing to create new positions, including an AMI manager, AMI systems technician and a data analyst, to manage the systems associated with the new technology.

While smart meters are hardly new, with about half of all public utilities and more than 80% of investor-owned utilities like PG&E already employing them, the City Council’s conversion to the technology is relatively recent. In 2012, the council opted not to make the change, citing high costs and uncertain benefits. Council members had a change of heart in November 2018, when they unanimously endorsed the technology and approved a road map for implementing it.

A key step in the process occurred on July 7, when the Utilities Advisory Commission voted to approve drawing \$18.5 million from the Utilities Department’s “electric

special projects” reserves to pay for advanced metering infrastructure (the funds will ultimately be replenished by electric, gas and water ratepayers). The council is scheduled to approve the commission’s recommendation once it returns from its summer recess.

The commission, which has been discussing the project for years, generally agreed that the switch will benefit both the city and customers. The only dissenter was Commissioner Phil Metz, who suggested that the city should develop a clear plan for “smart grid” programs before proceeding with the investment. Other commissioners, including A.C. Johnston and Greg Scharff, all supported making the change now.

“It’s really exciting to see this moving forward and getting close to actual implementation,” Johnston said during the July 7 discussion.

Johnston and commission Chair Lisa Forssell both said they were concerned about potential cybersecurity threats to the advanced metering system. While they were assured by staff that each of the vendors complies with industry standards when it comes to privacy and security, Forssell urged staff to work with auditors and security firms to perform infiltration tests to ensure the system is safe.

And while commissioners generally agreed that the system would bring tangible benefits to electric and water users, Scharff

noted that the benefit for gas customers is less tangible and questioned the need to invest in the gas utility, which may gradually get phased out over the coming years as the city tries to meet its environmental sustainability goals.

Utilities staff noted, however, that keeping existing gas meters in place would require the city to retain meter readers and thereby forgo one of the major economic benefits of the new system.

“Not investing in radios for the gas utility is not economical because we would be sending meter readers just to read the gas meters,” said Shiva Swaminathan, senior resource planner at Utilities Department.

The project will unfold in phases, with about 100 meters installed in early 2022 and an additional 3,000 meters in late 2022 and early 2023. Crews would then install the remaining 71,000 meters by the end of 2024. In addition to replacing every electric meter, the project calls for replacing 8,369 water meters that are more than 20 years old. The rest would be retrofitted with “SmartPoints” to enable a connection to advanced metering infrastructure. About 24,000 gas meters would also be retrofitted with SmartPoints so that each would contain a radio that would wirelessly transmit gas data.

Utilities staff noted that the system would provide customers with information that would



Courtesy: city of Palo Alto

Courtesy: city of Palo Alto

Palo Alto’s move to “advanced metering infrastructure” will require installation of five base stations with 10 boxes, like the one pictured on the right.

enable them to use gas more efficiently, thus allowing the city to buy less gas and the customer to achieve savings on their bills.

“That’s where the community sees bill savings — by not having to buy that additional gas because they’re using the information from their AMI system to use energy more efficiently,” Jonathan Abendschein, assistant director for utilities resource management, said at the meeting.

Metz, meanwhile, noted that

the city has yet to fully define the “smart grid” programs that it hopes to implement once the new technology is in place. The city, he said, should develop a “concrete plan” for these programs to justify the city’s investment in advanced metering infrastructure.

“I sort of feel like ‘smart grid’ was used as a slogan and not fleshed out,” Metz said. ■

Email Staff Writer Gennady Sheyner at gsheyner@paweekly.com.

PROTECT YOURSELF FROM UTILITIES SCAMS

HOW TO SPOT A SCAMMER ON THE OTHER END OF THE LINE— AND WHAT YOU SHOULD DO.

VERIFY THE CALL

Scammers may pretend to be a City of Palo Alto Utilities (CPAU) employee. Some can spoof their numbers to appear legitimate on your caller ID.

The suspects may try to convince you that your utilities bill is past due, and that your utility service will be shut off if you do not send money right away. You may be asked to pay by pre-paid debit card or money transfer service.

If you receive a call from someone claiming to be from the Utilities Department, asking for money or other personal information, please hang up and call the Palo Alto Utilities Customer Service Center at **(650) 329-2161** to verify your account information or log in to your MyCPAU account at mycpau.cityofpaloalto.org

HOW YOU KNOW IT’S A SCAM

CPAU will contact you in writing and through other communication means if your account balance is overdue. We will not demand immediate payment over the phone and threaten to shut off service, and we will **NEVER** ask you to pay your Utilities bill with a pre-paid debit card typically available from convenience stores. Using these untraceable cards will prevent you from ever getting your money back.



CONTACT US IF YOU SUSPECT A SCAM

- Phone (650) 329-2161
- Web cityofpaloalto.org/UtilitiesCustomerService
- Email UtilitiesCustomerService@cityofpaloalto.org

CPAU offers several flexible payment options such as online through MyCPAU and automated phone system. Find details at cityofpaloalto.org/UtilitiesCustomerService



CITY OF
PALO ALTO
UTILITIES

Drought

(continued from page 5)

dry weather since 1895, and one of the most exceptional occurred between 2011 and 2017, according to the National Oceanic and Atmospheric Administration's National Integrated Drought Information System.

Ask local water providers what they'll do in a deep drought or catastrophic failure of their own system and they look to the other cities. Most have interties: pipe systems that allow them to move water from one municipality to another. But in a catastrophic drought, would neighboring cities have extra water to spare?

Here's a look at the water capacity of local jurisdictions and alternative sources of water based on 2019-2020 data from BAWSCA's annual survey, which was published in March 2021.

Palo Alto

Palo Alto is among the more diversified local municipalities when it comes to water. In fiscal year 2019-2020, the city and its 67,082 residents used 10.5 million gallons of water per day. About 93% came from the San Francisco Regional Water System. Recycled water accounted for 7%.

Palo Alto uses recycled water to irrigate its golf course and a city park and to fill its duck pond. The recycled water is also used for the city's Emily Renzel Marsh enhancement project and as part of processing at the water quality control plant. Recycled water is not for drinking or swimming in.

Palo Alto has recently improved its water capacity through its Emergency Water Supply and Storage Project, which rehabilitated five existing wells, constructed three new wells and built a new 2.5-million-gallon emergency water-storage reservoir. The eight emergency wells can pump up to 15.5 million gallons per day if needed.

The city's seven storage reservoirs — Mayfield, Boronda, Corte Madera, Dahl, El Camino, Montebello and Park — have a total capacity of 13 million gallons.

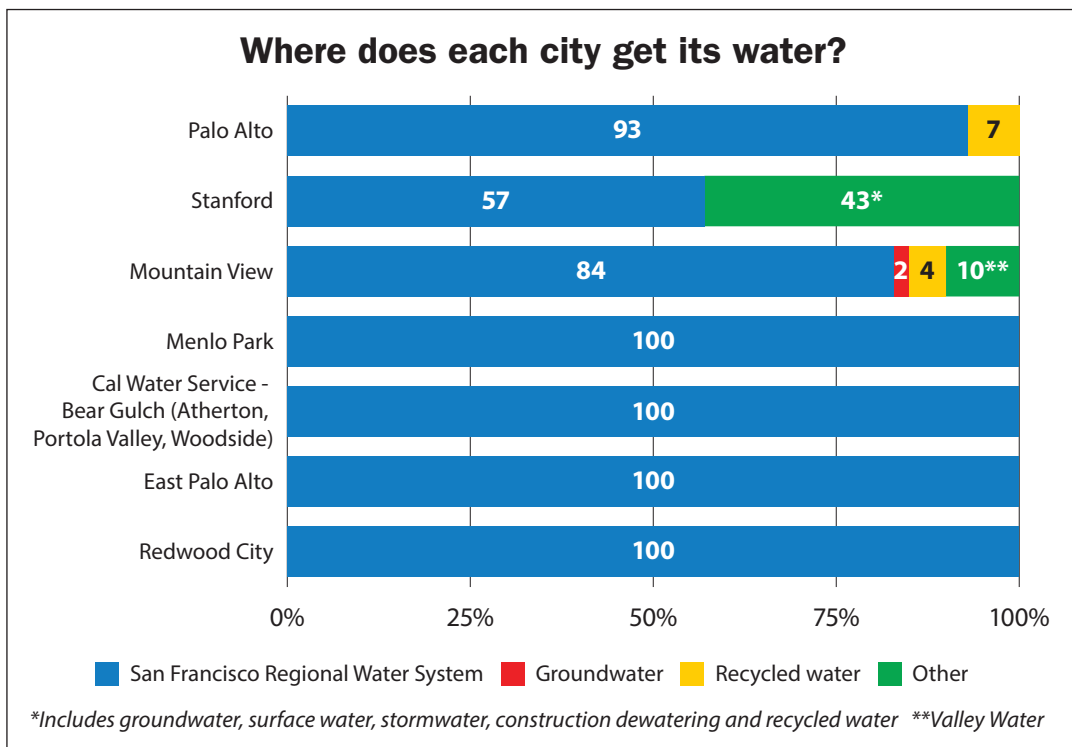
The city now has adequate storage and pumping capacity to provide back-up should there be an interruption of San Francisco water service. The wells may also be available to meet limited dry year requirements, according to BAWSCA.

It has interties with East Palo Alto County Water District, Mountain View, Purissima Hills Water District and Stanford University.

Days of storage: 1.13

Stanford University

The Stanford Sustainability & Energy Management Department supplies water to the campus area



and Stanford's unincorporated lands, serving 32,075 people, which is the university's average daytime population, according to BAWSCA.

Stanford's average daily water demand is 2.5 million gallons per day.

The university has five sources of water: purchased potable water from the San Francisco system, groundwater, non-potable surface water from the local watershed, stormwater and runoff capture, and recycled water, according to BAWSCA.

Stanford gets 57% of its water from the San Francisco system. Another 43% comes from "other" sources, including Stanford's surface-water diversions such as Searsville Lake and groundwater. Alternative sources include local groundwater, surface water, stormwater, construction dewatering and recycled water. The university now tracks its other supplies for use as irrigation water.

Four wells on Stanford property could be used to supply 3.7 million gallons per day in an emergency.

Stanford also has three storage reservoirs with a total capacity of 9.5 million gallons, according to BAWSCA. A recycled water plant completed in 2008-2009 was decommissioned in 2015 but could be used in the future, the BAWSCA report stated.

It has interties with Palo Alto.

Days of storage: 2.5 to 4

East Palo Alto

The city of East Palo Alto's water utility receives all of its potable water supply from the San Francisco system. In 2019-2020, the city used 1.5 million gallons of water per day with only about 311,000 gallons of water annually coming from groundwater.

The water utility, which serves 26,181 people, is operated and managed by a private contractor. Two privately owned water companies, O'Connor Tract Water Coop and Palo Alto Park Mutual Water Company, serve a small area of the city separate from the city's water supply.

The city's water system has no storage facilities or alternate potable water supply sources in the event of an earthquake. The city has 3.6 million gallons of storage identified but approval and funding have not been secured, according to BAWSCA.

East Palo Alto has one emergency well that is not currently certified for drinking-water use.

It has interties with Palo Alto and Menlo Park.

Days of storage: No storage. East Palo Alto cannot sustain a loss of water without obtaining water through its interties in an emergency.

Menlo Park

The city purchases all of its water directly from the San Francisco system and uses nearly 3 million gallons of water per day. Menlo Park Municipal Water runs the city of Menlo Park's water system and serves 18,224 people. Two reservoirs supply the Sharon Heights area.

There is emergency storage in the areas supplying north and east of El Camino Real.

California Water Service and the city's storage well are the primary emergency sources of water for Menlo Park, according to BAWSCA.

The area has emergency interties with California Water Service Bear Gulch District, Redwood City, O'Connor Tract Water Coop and East Palo Alto.

Days of storage: 0.65

Mountain View

The city of Mountain View serves a population of 79,772. Its primary water supplier, San Francisco Regional Water System, provides 84% of the water. Valley

Water supplies 10% treated water; 2% supply is from groundwater and 4% from recycled water. The city uses more than 9 million gallons per day.

California Water Service also provides water to a small part of Mountain View, according to BAWSCA.

The city has four water storage facilities, above and below ground, said Elizabeth Flegel, city water resources manager.

Mountain View has four active wells (and four are currently out of service). They are not currently operated at their maximum capacity due to various maintenance and operational issues.

Local storage in the reservoirs and the wells comprises a total of 17 million gallons, according to BAWSCA.

Flegel said the city is studying its recycled water distribution system and is updating a feasibility study for expansion. Mountain View's construction program requires contractors to do hydrant metering so that water trucks using hydrant water to keep construction dust down track how much is expended and are charged for the water, Flegel said.

The city has interties with Palo Alto, Sunnyvale, Valley Water and California Water Service.

Days of storage: If the city lost its San Francisco water supply only, it could utilize wells, Valley Water or storage to meet an eight-hour outage.

California Water Service

This sprawling water operator has multiple districts on the San Francisco Peninsula, including the Bear Gulch and Los Altos districts.

The Bear Gulch district is located in southern San Mateo County and serves Atherton, Portola Valley, Woodside, parts of Menlo Park, parts of unincorporated Redwood City and adjacent unincorporated portions of San Mateo County including West Menlo Park, Ladera, North Fair Oaks, and Menlo Oaks.

The Bear Gulch district receives

85% to 95% of its daily supply from the San Francisco system. The balance is supplied by surface water runoff from California Water Service Company's watershed.

In 2019-2020, the district used nearly 11.5 million gallons of water per day to serve 60,827 residents. Local surface water, local groundwater (in its Skyline system only) offer a limited additional supply.

The water is stored in the 215-million-gallon Bear Gulch reservoir, which is treated at a filtration plant before distribution, but the reservoir's capacity has been reduced by six feet to be in compliance with California Division of Safety of Dams safety requirements.

Although Bear Gulch reservoir is currently at 80% capacity, the treatment plant isn't running at this time, said Lee Blevins, production superintendent for the district. Currently, the district is using 100% of its water directly from the San Francisco system.

"Turning on the treatment plant would deplete the reservoir. The supply is seasonal," he said.

The reservoir water is used in late fall through early spring during the rainy season when it is replenished.

The district also has storage tanks ranging from 50,000 to 1 million gallons, Blevins said. The total storage capacity for the reservoir and tanks is 226 million gallons, according to the BAWSCA report. The system has interties with Redwood City and Menlo Park.

Days of storage: If the Bear Gulch district lost all of its sources of water supply, it would have 0.92 days of water, according to the BAWSCA report

The Los Altos district, which does not obtain water from the Hetch Hetchy system, provides water to Los Altos Hills, Los Altos, Mountain View and Sunnyvale through groundwater and water from Valley Water and serves more than 55,000 people, according to its 2010 Urban Water Management Plan, its most recent report. Water use was projected to reach 21 million gallons per day by 2020.

Approximately 32% of its water supply comes from groundwater and up to 68% is purchased from Valley Water, but these numbers are variable based on the water supply from Valley Water. The district can pump out more water from the ground if needed and it encourages conservation.

The Los Altos district doesn't store water seasonally. In an extended drought, it would need to install new wells to meet demand, according to the water management plan. ■

Email Staff Writer Sue Dremann at sdremann@paweekly.com.

About the cover: Drought raises questions about how diversified cities' water sources are. Photo of Lexington Reservoir by Kevin Legnon. Cover design and illustration by Paul Llewellyn.

Public Agenda

A preview of Palo Alto government meetings next week

CITY COUNCIL ... The council has no meetings scheduled this week.

Food

(continued from page 9)

particularly efficient — the three, one-hour volunteer sessions involved about 19 volunteers delivering 41 food boxes in bike trailers within a roughly 10-mile radius — it is a creative partnership that gets people to help out, exercise and learn about a new neighborhood from those who know it best. According to Violeta Palatto, the bike coalition's engagement and development officer, the volunteer sessions are popular and fill quickly.

Volunteer Jon Williamson was already back at the second event in May after attending the first in April, this time with his wife, Miki Chang, to deliver four boxes. He said he enjoyed the experience because he got to explore unfamiliar parts of San Jose and help neighbors.

Reducing waste to protect the environment

Looking at how to improve local food systems also involves taking on efforts to reduce food waste.

When food waste goes into landfills, it breaks down to produce methane, a greenhouse gas that accounts for about 20% of global emissions. The U.S. Department of Agriculture estimates that between 30% and 40% of the food supply becomes waste.

Senate Bill 1383, passed in 2016 in California, is aimed at curbing emissions from reducing the

amount of food waste and sets clear targets to, by 2025, reduce organic waste disposal by 75% from 2014 levels and rescue at least one-fifth of the currently disposed edible food.

Regulations that CalRecycle has established to meet those goals take effect on Jan. 1, 2022, and jurisdictions are expected to have programs in place to work toward those goals. Among the mandated programs are a requirement for jurisdictions to offer compost pickup to all residents and businesses and to establish an edible food recovery program for certain types of businesses that generate food that may be wasted.

Compliance for "tier one" food generators, including supermarkets and large grocery stores, starts in 2022; for "tier two" food generators, like large restaurants, hotels or health facilities with cafeterias or on-site food service, it starts in 2024.

However, figuring out who those generators are in Santa Clara County was its own project. Bacon mentored a team of students through a project to identify the tier one generators countywide and found that it took more than 45 hours of analysis to narrow down a list received from the Environmental Protection Agency and other agencies into one the county can use moving forward, he said.

Looking for the food revolution

While the hardships facing the food system are not likely to abate any time soon, Bacon said he's recently seen some positive shifts.

For instance, the pandemic has prompted a resurgence of interest in CSA, or community-supported agriculture farm boxes, and it has brought continued recognition that access to fresh fruits and vegetables is important from a public health perspective. On his campus, he said, he's seeing students reducing their meat consumption for health and environmental reasons.

The next time the collaborative gets to meet in person, Bacon said, the plan is to organize a field trip and workshop to learn about local indigenous agricultural knowledge and practices from the Amah Mutsun tribe.

However, whether the initiatives develop into anything bigger remains to be seen.

Santa Clara County policymakers appear to be starting to work toward a more comprehensive approach to support local food systems.

At the county Board of Supervisors' May 4 meeting, the board received a report from staff that laid out 12 recommendations for strengthening the resiliency of the local food system.

The steps focus around the larger goals of creating an internal working group of county agencies, to be called the "Kitchen Cabinet," that aims to improve coordination between departments; establishing a new countywide Food Systems Leadership Collaborative to connect the Kitchen Cabinet to cities and existing food system programs; and forming a new advisory council made up of residents from vulnerable neighborhoods

to guide policymaking around food equity.

Other recommendations included creating program manager and management analyst positions to help lead those efforts, taking steps to permit farming on suitable public land, creating a plan to prepare for and respond to crises that disrupt food security, and working to boost enrollment in CalFresh, California's federal supplemental food assistance program.

Following requests from Board of Supervisors President Cindy Chavez, the board acted unanimously to receive the report, start recruiting for the program manager and management analyst positions, and ensure that the program focuses on producing equitable outcomes.

Equity is one topic that interests and concerns Bacon as well.

"Not only do we have an increasingly widely recognized need for racial justice, but we also have the climate crisis bearing on us headfirst," he said. "I think there is a new opening for building back more equity into these systems."

That could mean expanding urban agriculture, which can reduce air pollution and lower the temperature in urban areas that retain heat due to limited greenery and dense infrastructure. Or, to boost farms' resilience during droughts, it could involve shifts toward dry farming and finding more ecologically efficient farming practices could also help, he said.

Bacon said he draws inspiration from a woman named

Maria Catalan, who was one of the first local Latina farmworkers to own her own farm, which became organic-certified in the mid-2000s.

She lost her farm when a 2014 drought dried up the well, he said. She's been renting land and continuing to produce organic vegetables and was able to participate in the Pie Ranch and Veggliation farm box programs. He said he asked her how she got the strength to respond to the adversity she'd faced, and she said that it came down to her love of people, land and the work she was doing.

Whatever plan to transform the food system comes next, he argued, it will need to have an equitable path forward for workers, especially those who have had to work in parts of the industry that are more extractive and polluting.

"That's a gap that needs to be both researched and invested in on multiple levels," he said.

"We didn't revolutionize the food system yet, but we may have taken a few steps in that direction." ■

This article was produced as a project for the USC Annenberg Center for Health Journalism's 2020 Data Fellowship. It is the third in a series exploring the impacts of the COVID-19 pandemic on local food systems and policies. Read part one on AlmanacNews.com by searching for "Figuring out how to feed kids when they're not in school" and part two by searching for "From farms to families."

Email Staff Writer Kate Bradshaw at kbradshaw@almanacnews.com.

Mask

(continued from page 8)

when he talks, according to his father.

The father said that if his son wears a mask, "he'll never speak again in class."

"It's hard enough, when he speaks, for others to understand him, and he's aware of that," he said.

"I'm not challenging the mask mandate. I'm just invoking (my son's) rights under the exemptions," the father said.

As part of the lawsuit, the father requested a temporary restraining order to stop the school district from barring the student from attending class without a mask while the case is being heard. Judge Socrates Manoukian denied the request in a document filed July 12, stating the "plaintiff has not demonstrated a likelihood of success on the merits." The judge also stated that the "matter may now be moot" since more than three days had already passed since summer school started and the suit was filed.

The father, who is a patent attorney, told the Weekly that he will continue to pursue the lawsuit, and will add more "legal causes of action" and potentially more defendants. He added that he is not seeking any monetary legal damages.

"This is not about money," he said. "This is my son's future, his ability to go to school, get an education and go off to college and not to settle on some kind of harmful accommodation. ... I don't want any money."

The father hopes that the district will let

his son take an online course or an extra class, perhaps outside the district, that will satisfy his graduation requirements.

In an email, Superintendent Don Austin wrote that the father's suggestion that he does not have an issue with masking in general is "completely false." In emails shared with the Weekly, the father had previously reached out to the district to see if his family could be exempt from wearing masks during his daughter's eighth grade promotion ceremony last month.

"This is not a disabilities issue," Austin wrote.

In addition to noting that the student had no Individualized Education Program or a 504 plan, which ensures that a child with a disability receives proper accommodations, Austin said in an email that the parent was told on multiple occasions that the student would not be able to participate in summer school without a mask and that he would be compliant if he wore a "face shield with a drape combined with social distancing" instead.

"He was offered meetings and asked to share his new concerns with either documentation or an evaluation by our district nurse," Austin wrote. "He declined at every step and was personally confrontational with the staff. The assigned judge dismissed his request on merit."

"We do not expect everyone to agree with the rules set by the CDC or our (Santa Clara County Public Health Department), but we will follow their protocols as we have done since March of 2020." ■

Email Editorial Assistant Lloyd Lee at lee@pawebly.com.

PALO ALTO WEEKLY OPEN HOMES

ATHERTON

51 Watkins Ave **\$2,998,000**
Sat/Sun 1:30-4:30 4BD/2BA
Compass 650-279-7074

EAST PALO ALTO

760 Weeks Street **\$2,888,000**
Sat/Sun 10:00-4:00 11BD/11BA
Compass 650-646-1150

LOS ALTOS

22160 Berkeley Court **\$2,298,000**
Sat/Sun 1:30-4:30 4BD/2BA
Compass 650-703-6437

MENLO PARK

1221 Cotton St **\$3,498,000**
Sat/Sun 1:30-4:30 3BD/2BA
DeLeon Realty 650-785-5822

1216 San Mateo Drive **\$7,298,000**
Sun 1:00-4:00 4BD/3.5BA
Coldwell Banker Realty 650-619-6461

2141 Mills Avenue **\$4,149,000**
Sat/Sun 2:00-4:00 4BD/3.5BA
Compass 650-388-8449

755 Cambridge Avenue **\$2,998,000**
Sat 1:00-4:00 4BD/4.5BA
Coldwell Banker Realty 650-619-6461

2072 Ashton Avenue **\$3,588,000**
Sat/Sun 1:30-4:30 5BD/4.5BA
DeLeon Realty 650-900-7000

MOUNTAIN VIEW

696 Bryant Ave **\$3,498,000**
Sat/Sun 1:30-4:30 5BD/4BA
Compass 650-279-7074

PALO ALTO

678 Webster Street (C) **\$2,495,000**
Sun 1:30-4:30 3BD/2.5BA
Miles McCormick 650-400-1001

1122 Tahoe Lane (T) **\$1,948,000**
Sat/Sun 1:30-4:30 3BD/3.5BA
Compass 650-847-0432

170 Hawthorne Avenue **\$3,488,000**
Sat/Sun 1:30-4:30 4BD/5.5BA
DeLeon Realty 650-459-3888

4090 El Cerrito Road **\$4,488,000**
Sat/Sun 1:30-4:30 4BD/3.5BA
DeLeon Realty 650-900-7000

4135 Orchard Court **\$4,934,650**
Sun 2:00-4:00 5BD/7BA
The Dreyfus Group, Golden Gate Sotheby's International Realty 650-485-3476

4139 Orchard Court **\$4,934,650**
Sun 2:00-4:00 5BD/7BA
The Dreyfus Group, Golden Gate Sotheby's International Realty 650-485-3476

PORTOLA VALLEY

50 Cheyenne Point **\$3,488,000**
Sat/Sun 1:30-4:30 4BD/2.5BA
DeLeon Realty 650-459-3888

SAN CARLOS

780 Knoll Drive **\$2,988,000**
Sat/Sun 1:30-4:30 6BD/4.5BA
DeLeon Realty 650-397-8988

Legend: Condo (C), Townhome (T).
Agents: submit open homes at PaloAltoOnline.com/real_estate

Bikes

(continued from page 5)

Wilson, who lives on East Meadow, said all three of his children biked to school along the stretch for years and called the bike lanes on his street “some of the widest in the city.” He also said that the removal of parking spots on the south side of East Meadow, near the entrance Ramos Park, would require the park’s many young users to cross the busy street to get to the park. “Their parents park on the south side so their kids don’t have to run across the road,” Wilson said. “Removing the parking for

the south side means that all these kids that go to Don Ramos Park will be running across the road.”

George Greenwald, who lives on Ortega Court, near East Meadow Drive, similarly opposed the project, noting that the creation of wider bike lanes could force residents and their visitors to park farther from their homes.

“The inconvenience to the neighborhood, in our collective opinion, far outweighs the disruption to our neighborhood by making changes based on the unproven assertion that there is a safety issue,” Greenwald wrote.

For the city, the sudden surge of opposition creates a difficult

dilemma. The project in 2016 received a grant of more than \$900,000 from the Santa Clara Valley Transportation Authority. It also received a vote of confidence in January, when the council unanimously supported proceeding with the bike improvements and directed staff to perform further community engagement.

But at the same time, planning staff, council members and many community members acknowledge that south Palo Alto residents have painful memories of the city’s recent misadventure with Ross Road, where a long-planned streetscape project became a neighborhood flashpoint after the installation of an unpopular traffic circle on Ross and East Meadow, along with other street furniture along Ross. The city subsequently acknowledged its mistakes, modified the project and vowed to do a better job in reaching out to residents for future bike projects.

Commissioner Cari Templeton said that it’s hardly a coincidence that the locus of opposition to the latest south Palo Alto bike project is coming from the area closest to Ross Road.

“This neighborhood was very recently affected by a major transportation project,” Templeton said. “And there’s probably some lingering emotional feelings about this and a commitment perhaps among the neighbors to make sure they’re never caught by surprise again.”

In this case, however, accommodating the critics along one portion of East Meadow could upend the entire south Palo Alto effort. Chief Transportation Official Philip Kamhi said the VTA grant requires bike lanes along the entire route, consistent with the proposal in the city’s application. If Palo Alto opts to take a different direction, the transportation agency would likely withdraw its funding, he said.

“They’re going to take this money and give it to another community that wants to do something similar to this and has potentially the support to do so,” Kamhi said. “Without being able to provide a buffered and protected bike lane throughout, I don’t think we’ll have a grant-funded project.”

The loss of VTA funding would represent a significant setback for the city’s decadelong plan to enhance bike amenities in an area that serves Fairmeadow and Hoover Elementary and JLS Middle schools and that is heavily used by Gunn High students and by visitors to Mitchell Park and the Taube Koret Campus for Jewish Life. Bicycling in the area has only grown in popularity, with the rate of JLS students who bike to school increasing from 48% to 70% between 2009 and 2019. The percentage of Gunn students who bike to school went up from 33% to 50% over the same period, according to transportation staff.

The road segment is identified as a priority in the city’s 2012 bike master plan. And on Wednesday, transportation planner Joanna Chan pointed to a fall 2020 survey in which parents of elementary school students cited the lack of



Cyclists bike down East Meadow Drive in Palo Alto on July 14.

protected bikeway as the main reason for why they don’t allow their children to bike to school. Shifting more people to bike would also align with the city’s goals of reducing the greenhouse-gas impacts of transportation, which accounts for an estimated 65% of the city’s emissions, Chan said.

“Projects such as this one support mode shift from vehicle trips to active transportation modes,” Chan said. “It’s a relatively low-cost and efficient strategy to reduce greenhouse-gas emission and reduce the barriers to bicycling identified by local parents.”

Given the expected benefits, the planning commission agreed to push ahead with the proposed improvements, notwithstanding the criticism from residents on and near East Meadow. Commissioners noted that the stretch of East Meadow east of Middlefield Road represents just one of six segments along the proposed route. It is, however, the portion of the project area with the largest number of residential properties.

“I feel that we do have some expectation that more children will be able to bike independently when the biking facilities are more protected and safer,” Templeton said. “I think it’s really exciting that we have this opportunity to use funds from an external source to improve our city streets for bikers.”

While the commission swiftly approved the addition of bike

lanes to Fabian Way, the widening of Waverley Street and the addition of protected lanes between Alma Street and Middlefield, it proposed a more cautious approach for the eastern portion of the East Meadow segment. Ultimately, the commission voted 6-0, with Vice Chair Giselle Roothparvar recused, to back a motion from Commissioner Ed Lauing that endorsed the protected bike lanes and urged city planners to explore modifications so that fewer parking spots would have to be removed east of Middlefield Road.

The approved motion also directed staff to continue negotiating with the VTA in hopes that the agency will allow the city to use grant funding for the less contentious segments while the city considers other options for East Meadow east of Middlefield.

Commissioner Bryna Chang questioned whether protected bikeways favored by the VTA are really a “universal solution” for all segments of the bike route and underscored the need to continue to engage with the residents as the project moves ahead.

“I feel strongly that a lot more community engagement needs to be done to understand the nitty gritty of how things will need to be ... implemented,” Chang said. ■

Email Staff Writer Gennady Sheyner at gsheyner@paweekly.com.

W. G. (Bill) McElhinney

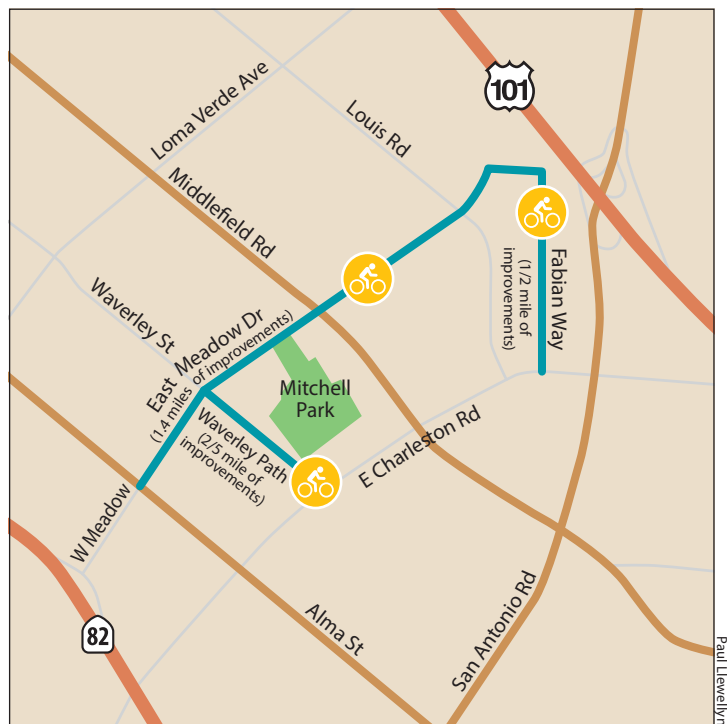
1928 – 2021

Born in 1928 in Oakland, California, Bill was raised as an only child by his mother Gladys, his parents divorcing when he was a toddler. His older sister Barbara died as an infant before he was born. He went to Oakland High School, at 18 he joined the US Army and went to Japan where he served during the



country’s rebuilding after WW2. One of the stories he liked telling was while serving in Japan he climbed Mount Fuji. When he returned, he utilized GI bill funds to attend UC Berkeley, studying Architecture. He met his future wife Cyanne on a blind date on campus. They married in 1952 and celebrated in the garden of her family home in Palo Alto. They were married 51 years, raising children and later traveling together on many adventures. Bill’s architecture practice included designing commercial buildings and many dream homes in rural and wilderness locals. He won an AIA (American Institute of Architects) design award for a duplex home built in Santa Cruz. Before retiring he was popular with families designing additions to mid-peninsula homes. After retiring Bill enjoyed traveling around the British Isles with Cyanne and studying architecture in many places including Barcelona and Edinburgh. He particularly enjoyed Craftsman homes including the 1911 Craftsman his family lived in in Palo Alto. He also really liked “listening in” on ham radio and belonging to the Palo Alto Amateur Radio Association. He loved computers and was an active, early and longtime member of the Epsom User Group. Several years after Cyanne passed in 2004 Bill felt very fortunate to have met a second partner-in-life Ruth and they spent a wonderful time together traveling and hosting family and friends from all over the country. After a short battle with bladder cancer Bill passed away on May 9th, 2021 at 93 years young. He is survived by partner Ruth Sherer, children Glenne McElhinney, Gregg McElhinney (Connie), Dana Wright (Charles) and grandchildren Gregg and Cameron Wright. The family wants to thank the Wright family of Marina, CA who along with the McElhinney’s Bill humbly presided over as family patriarch. In lieu of flowers the family suggests donations to Hidden Villa, in memory of William McElhinney to the Summer Camp Scholarship Fund: Hidden Villa, 26870 Moody Road, Los Altos Hills, CA 94022 or HiddenVilla.org.

PAID OBITUARY



Palo Alto is preparing to make bike improvements to busy segments of East Meadow Drive, Fabian Way and the Waverley path.

Pulse

A weekly compendium of vital statistics

POLICE CALLS

Palo Alto
July 8-July 14
Violence related
Channing Avenue, 6/1, 7:04 p.m.; child abuse/physical.
El Camino Real, 7/7, 10:56 p.m.; family violence.
El Camino Real/Quarry Road, 7/7, 1:58 a.m.; sexual assault/rape.

Pasteur Drive, 7/7, 8 a.m.; sexual assault.
El Camino Real, 7/9, 5:36 p.m.; domestic violence.
Greer Road, 7/11, 1:37 p.m.; domestic violence/battery.
Palo Alto Avenue, 7/12, 2:15 a.m.; domestic violence/battery.
San Antonio Road, 7/13, 2:13 p.m.; domestic violence/battery.

Theft related
Fraud 1
Grand theft 2
Identity theft 3
Petty theft 4
Residential burglaries 2

Shoplifting 4
Vehicle related
Auto recovery 1
Auto theft 2
Bicycle theft 3
Driving w/ suspended license 4
Hit and run 8
Misc. traffic 1
Stolen catalytic converter 2
Theft from auto 9
Vehicle accident/minor injury 5
Vehicle accident/prop damage 4
Vehicle impound 1
Vehicle tow 4

Alcohol or drug related
Drinking in public 1
Driving under influence 4
Drunk in public 1
Possession of drugs 5
Possession of paraphernalia 1
Under influence of drugs 1

Miscellaneous
Brandishing weapon 1
Found property 5
Hate crime 1
Lost property 6
Misc. penal code violation 3
Outside investigation 2
Possession of stolen property 1
Psychiatric subject 5
Suspicious circumstances 6
Vandalism 6
Warrant/other agency 7

Petty theft 1
Vehicle related
Auto theft 4
Bicycle theft 4
Driving w/ suspended license 1
Hit and run 1
Stolen catalytic converter 3
Vehicle accident/minor injury 4
Vehicle accident/no injury 1
Alcohol or drug related
Possession of paraphernalia 2

Menlo Park
July 7-July 13
Violence related
800 block El Camino Real, 7/9, 3:13 p.m.; battery.
Theft related
Burglary 2

Miscellaneous
Coroner case 1
Court order violation 1
Found property 3
Mental evaluation 2
Other/misc. 3
Property for destruction 1
Resisting arrest 1
Trespassing 1

OBITUARIES

A list of local residents who died recently:

Kaleen Esther Abel, 103, a longtime Palo Alto resident, died on June 12; **Linda Mankin**, 93, a former music lecturer at Foothill College and a longtime Palo Alto resident, died on June 12; **Alvin Platt**, 86, a Palo Alto resident and former president of the Palo Alto Humane Society, died on June 17; and **William S. Anderson**, 102, the former president of the National Cash Register Corporation and a Palo Alto resident, died on June 29.

To read full obituaries, leave remembrances and post photos, go to Lasting Memories at PaloAltoOnline.com/obituaries. ■

Memorial Service for Sarah Johnson

We lost Sarah to Covid-19 in Kirkland, Washington on April 18th, 2020. Dick Johnson and family invite you to join them at First Presbyterian Church Palo Alto (where they were long time members) for a celebration of her life. There will be a service of music, prayers, and stories of her life and of those who were touched by her life. A reception will follow the service.

Date and time
Sat., July 17, 2021
2:00 PM – 4:00 PM

Location
First Presbyterian Church of Palo Alto
1140 Cowper Street
Palo Alto, CA 94301



Church COVID-19 Guidelines

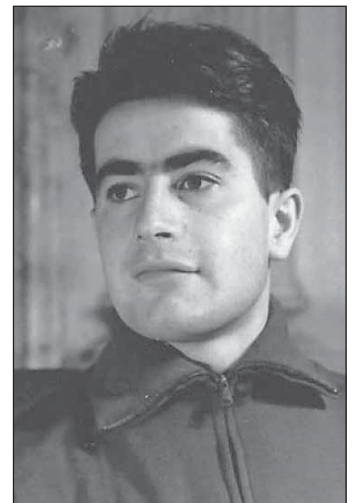
For inside gatherings we request that participants wear masks, maintain physical distancing, and seek consent before engaging in any physical interaction. All staff and volunteers will wear masks. We will refrain from communal singing with or without a mask. Color-coded bracelets, nametags and stickers will be available to indicate people's preference for interaction.

PAID OBITUARY

Dr. John Bordy

January 21, 1938 – June 28, 2021

Dr. John Bordy died June 28, 2021. He was born in Marosvásárhely, which is also known by its Romanian name, Târgu Mures. Dr. Bordy was a true Szekely and identified deeply with his Hungarian roots, but he embodied the American dream. He wanted to be a doctor before the age of ten and knew his chances of achieving that dream were slim as an ethnic Hungarian living in Romania. Dr. Bordy left home at the age of 18 to play on the Romanian national water polo team in the 1956 Olympics in Melbourne, Australia. Although he didn't win the gold, he did win an opportunity to defect with other Hungarian athletes. They toured the United States on a trip called the Freedom Fighters' Tour, which was sponsored by Sport's Illustrated. He enrolled at UC Berkeley, barely speaking English, where he played water polo all four years and was known as "short, broad-shouldered Bordy." During that time, he was also a member of the San Francisco Olympic Club and won the American National Championships in '57 and '59. In 2010, he was inducted into the Olympic Club Hall of Fame. He graduated Stanford medical school with highest honors. After his internship, he enlisted in the Navy and spent two years with his family on Mare Island. He returned to Stanford for his residency in orthopedic surgery, then worked for Kaiser Permanente in Redwood City for 30 years, eventually heading the department. For many years, he and one other doctor were the entire orthopedic department, which is why most locals know someone who has had a bone set or hip replaced by Dr. Bordy.



He leaves behind his wife of 62 years, Ellen Bordy, nee Silva, his son Michael (Linda), daughters Eileen Skidmore (Earl) and Carolyn Dubbel (David), grandchildren Jeanette Boroumand (Behzad), John and Megan Bordy, Jolie Sheldon (Steve), Quinton and Liam Isaacs, Natalie and Eric Dubbel, and great granddaughters Cammie Sheldon and Eve Boroumand.

Dr. Bordy was an original, an amazing man, determined and stubborn, committed and loyal, fun-loving and a little crazy. Nobody could tell him he couldn't do something, like attend college without knowing the language. He was a dubious carpenter and dug his family's first swimming pool with a shovel. If you were called a gomer by him, he probably liked you. He loved his family and many friends; his Samoyed dog, Simba; the mountain he lived on in La Honda; water polo and soccer; building things; riding his tractor; and the hummingbird he watched out of his dining room window.

A public celebration of his life will be held August 7th. Please contact a family member for more details.

PAID OBITUARY

Answers to this week's puzzles, which can be found on page 31.

P	S	A	T		A	W	O	R	D		A	P	E	X	
O	H	S	O		N	A	C	H	O		V	E	R	B	
R	E	C	O	R	D	S	H	O	P		O	T	T	O	
E	R	A	T	O		O	D	I	N		R	E	X		
D	E	P	A	L	M	A		E	N	O	K	I			
			T	E	A	M	B		G	A	R	C	I	A	
R	E	O		S	H	A	R	P		H	I	H	A	T	
E	R	R	S		I	N	A	I	R		S	O	T	O	
D	I	G	I	N		A	G	L	E	T		R	E	M	
D	E	A	L	E	R		G	O	P	R	O				
			N	O	M	E	N		T	O	U	R	I	S	T
Z	A	P		O	W	E	D			C	A	N	W	E	
I	F	I	T		O	P	E	N	L	E	T	T	E	R	
N	A	P	A		R	A	M	O	S		O	R	E	S	
C	R	E	D		K	L	I	M	T		R	O	P	E	

6	9	8	1	2	3	7	4	5
2	1	5	6	7	4	9	8	3
3	7	4	5	9	8	2	6	1
7	5	1	4	8	9	6	3	2
9	6	3	7	1	2	4	5	8
4	8	2	3	5	6	1	7	9
8	3	7	9	6	1	5	2	4
1	2	6	8	4	5	3	9	7
5	4	9	2	3	7	8	1	6

VERY
REAL
LOCAL
NEWS

Print or online subscription starts at only \$5 /month

Visit: PaloAltoOnline.com/join

Palo Alto
Weekly

#PressOn

SUPPORT LOCAL
JOURNALISM



170 HAWTHORNE AVENUE PALO ALTO



STYLISH CRAFTSMAN BLOCKS TO UNIVERSITY AVENUE

This beautifully renovated Craftsman home offers modern, stylish living space and an incredible location just blocks from the exciting amenities of University Avenue. Handsomely appointed with rich hardwood floors and impeccable millwork, the traditional floorplan offers plenty of space for entertaining and everyday living, beginning with the expansive living room centered by a fireplace, and continuing into the dining room that opens to the chef's kitchen with stainless-steel appliances and a breakfast bar. The lower level offers office space allowing you to work from home in style, as well as a convenient kitchenette. Friends and family alike will find comfortable accommodations in the home's 4 bedrooms, including the spacious master suite with a private entrance, while the detached studio includes a kitchen, bathroom, and laundry. Just moments to chic downtown eateries and boutiques, this home is also close to beautiful parks, as well as Stanford University, Stanford Shopping Center, Caltrain, and acclaimed schools Addison Elementary, Greene Middle, and Palo Alto High.

OPEN HOUSE: SATURDAY & SUNDAY 1:30 PM - 4:30 PM

www.170HawthorneAve.com

Offered at \$2,988,000

Listed by Michael Repka and Alexandra Wilbur of the DeLeon Team, the #1 Team in Palo Alto

Data from BrokerMetrics © based on MLS sales from January 1, 2020, to December 31, 2020, in Palo Alto, residential properties, with no off-MLS sales included in the rankings.

2.5% Commission Paid to Buyer's Agent • Waived if DeLeon Buyer's Agent

For more information contact: Alexandra Wilbur, DRE #01926475 | 650.459.3888 | alex@deleonrealty.com
Managing Broker: Michael Repka, DRE #01854880 | www.deleonrealty.com | DeLeon Realty, Inc. | DRE #01903224



4090 EL CERRITO ROAD
PALO ALTO



OVER .40 ACRES IN PEACEFUL BARRON PARK

An incredible lot of over .40 acres in the sought-after Barron Park neighborhood sets the stage for this brilliantly updated 4-bedroom, 5-bathroom home totaling over 2,800 square feet, including guest quarters. Bright, fresh interiors take many cues from the rural beauty that Barron Park espouses, with magnificent ceilings featuring wood beams, plus walls with adobe brick detail, and glass doors that open to the stunning grounds to create seamless indoor/outdoor space. Highlights of the home include the living room with fireplace, the remodeled kitchen with Bosch appliances, remodeled bathrooms, and radiant heated floors throughout. An office adjacent to the garage provides great work-from-home space, while the guest quarters offers comfortable accommodations for friends or extended family. The grounds of the home include a pool with a wave machine, a hot tub, built-in grill, and sauna, plus backyard gate access to nearby Gunn High School and the Bol Park bike path. Located at the end of a peaceful cul-de-sac, this home feels far removed from the fast pace of Silicon Valley, yet you will still be just a short trip to downtown Palo Alto, Stanford University, and The Village at San Antonio Center, as well as within one-half mile of iconic Bol Park.

OPEN HOUSE: SATURDAY & SUNDAY 1:30 PM - 4:30 PM

www.4090ElCerrito.com

Offered at \$4,488,000

Listed by Michael Repka of the DeLeon Team, the #1 Team in Palo Alto

Data from BrokerMetrics © based on MLS sales from January 1, 2020, to December 31, 2020, in Palo Alto, residential properties, with no off-MLS sales included in the rankings.

2.5% Commission Paid to Buyer's Agent • Waived if DeLeon Buyer's Agent

Michael Repka, DRE #01854880 | 650.900.7000 | michael@deleonrealty.com

中文諮詢請聯繫 Audrey Sun, DRE #01933274 電話: 650.785.5822 | www.deleonrealty.com | DeLeon Realty, Inc. | DRE #01903224

Spectrum

Editorials, letters and opinions

This week on Town Square

Town Square is an online discussion forum at PaloAltoOnline.com/square

In response to 'Hospitals clash with Anthem Blue Cross over health care prices, leaving patients in a lurch'

Posted July 13 at 8:16 a.m. by Penny Kobiesky, a resident of Los Altos:

"Bernie Sanders and Elizabeth Warren's concept of 'Medicare for all' could remedy this problem by eliminating insurance companies altogether.

A government-issued health care card that the insured could use anywhere and for anything (except cosmetic surgery) would seal the deal on a comprehensive national insurance plan, and billings could then go directly to the federal government for compensation."

In response to 'Public defender Sajid Khan runs for Santa Clara County district attorney'

Posted July 12 at 11:52 a.m. by James Fisher, a resident of Menlo Park:

"Khan sounds like a good candidate for Santa Clara County District Attorney.

As a former public defender, he won't kowtow to the various police departments who have now come under fire for questionable tactics and practices.

It's time to take the guns out of the cop's hands if they cannot act responsibly with them."

In response to 'Gov. Gavin Newsom urges all Californians to cut water use by 15%'

Posted July 11 at 8:34 p.m. by Leslie York, a resident of Old Palo Alto:

"You can't conserve your way out of a drought.

A succession of California governors has done pretty little about water since the '70s, but we will have a high-speed train between Bakersfield and Merced in this soon-to-be dust bowl. As far as I know, there are

no state desalination plants on the drawing board, but you'll be able to go between Bakersfield and Merced in a hurry."

In response to 'New 101 bridge project to progress with concrete work this weekend'

Posted July 10 at 4:20 p.m. by Art Liberman, a resident of Barron Park:

"Also, there's a lovely new paved access to the New Highway 1010 bridge from E. Meadow Drive along Adobe Creek. I wish more of the Palo Alto Bayland trails were paved. The bridge will be a great cycling route to head over to Mountain View's Bayland trails ... not so great for Palo Alto, unless you like riding on rutted trails with rough gravel."

In response to 'Cities make the case for a bicycle superhighway'

Posted July 10 at 2:07 p.m. by Steve Dabrowski, a resident of Duveneck/St. Francis:

"Maybe Peninsula cities ought to just send out five or six people on bicycles for a month or so every day to make their best way between Redwood City and Mountain View, then have them write up their choices and publish it in a glossy brochure. They would get a better result and save a bunch of money.

Several years ago, I commuted from near Channing Avenue and Middlefield Road to San Carlos and used mostly Middlefield with some side streets on my 10-speed bike. I had no problems. Also, earlier I had commuted from the same point to just the other side of Ellis Street in Sunnyvale also using Middlefield much of the way with some side streets included. A 'super highway' is of no special benefit as it is always going to take a route that jogs around to get to the final destination, so just get on your

bike and find your own decent way on streets that are comfortable."

In response to 'Five Palo Alto officers sue city over Black Lives Matter mural'

Posted July 7 at 12:27 p.m. by Rebecca Eisenberg, a resident of Old Palo Alto:

"The Palo Alto police officers' shameful response and irresponsible lawsuit — which will cost taxpayer money to defend — demonstrates how profoundly out of touch the Palo Alto Police Department is with the community. This symbol was not discriminatory or offensive in any legally recognizable way.

First, the police are not a 'protected class' under state or federal law. Anti-discrimination law protects only groups who have been subject to historic discrimination, and police do not qualify. In fact, the police are often the parties that are responsible for discrimination.

Second, the symbolism in the mural is far from clear. The inclusion of an image that appears to be Assata Shakur does not qualify as racist.

Third, the harassment claim is ludicrous. Even if I did not publish two articles about hostile workplace sexual harassment for the Harvard Law Review — which I did — a first-year law student knows that to qualify as hostile, the workplace harassment must be pervasive: An ambiguous image in a mural is anything but.

The irony is that had the image been something truly harassing, such as Nazi swastikas, the officers would not have noticed. Racist imagery has existed for decades in Palo Alto without the police caring the slightest. Several public schools were named after known anti-semites and racists until finally several years ago, students and parents forced the Palo Alto Unified School District to rename them, while the police were silent. The record of the police department is rife with both willful blindness and active commission of discriminatory actions."

Letters

Open children's services

Editor,

Well past a year into the pandemic, with local vaccination rates in our city extremely high and community prevalence of COVID-19 extremely low, city services that we are taxed for and that community members rely on continue to be restricted. In particular are issues affecting children over the summer. Library hours are greatly reduced from what they were, limiting one of few free, safe summer options for children (the Children's Library is currently open 12 hours per week.) Also baffling is that drinking fountains in public parks remain off. Given what we know about COVID-19 transmission (surfaces play an extremely limited role), there seems to be no

remaining public health reason for this. Having drinking water access in parks during the summer heat seems more common sense.

I worry that some of the restrictions implemented during

the pandemic will persist simply because they are easier to maintain. The city should restore these services, which used to be among the benefits of living in Palo Alto.

Kathleen Tarlow
University Avenue, Palo Alto

WHAT DO YOU THINK?

The Palo Alto Weekly encourages comments on our coverage or on issues of local interest.



Should the city move ahead with protected bike lanes on East Meadow Drive?

Submit letters to the editor of up to 300 words to letters@paweekly.com. Submit guest opinions of 750 to 950 words to editor@paweekly.com. Include your name, address and daytime phone number so we can reach you.

We reserve the right to edit contributions for length, objectionable content, libel and factual errors known to us. Anonymous letters will generally not be accepted. Submitting a letter to the editor or guest opinion constitutes a granting of permission to the Palo Alto Weekly and Embarcadero Media to also publish it online, including in our online archives and as a post on Town Square.

For more information, contact Editorial Assistant Lloyd Lee at llee@paweekly.com or 650-223-6526 or Editor Jocelyn Dong at editor@paweekly.com.



TOP RANKED TEAMS AND AGENTS NATIONWIDE FOR VOLUME



#6

The Tse Group



#12

The Troyer Group



#185

Valerie Mein



#211

Eric Fischer-Colbrie

TOP RANKED AGENTS AND TEAMS FOR VOLUME



Rajeev Awasty
David Azimi
Viva Bakshi
Janette Barsanti
David Bergman
Anton Bion
Howard Bloom
Helen Burke
Nancy Carlson
Sean Chen
Sue Cheng
Mary Clark
Kim Connor
Kraig Constantino
Jennifer Cosgrove
Joraine Costales
Heather Crane
Mike D'Ambrosio
Hugo De Hoyos
Max de Vries
Kim Deol
Mark DeTar

Alicia Duarte
Trang Dunlap
Lavanya Duvi
Todd Fernandes
Patty Filice
Eric Fischer-Colbrie
Larry Franzella
Andy Gan
Linda Hymes
Cathy Jackson
Nakul Kapoor
Warren Kohn
Susan Kramer
Alana Lam
Jessie Li
Hebe Li
Maggie Li
Jason Lococo
Mike Magen
Zdenka Mahan
Roger Malech
Ivan Margaretich
Dolores Marquez
Bryan Martin
Jim Martin
Bret Maryon
Valerie Mein
Rob Mibach

Edith Miller
Suman Mirchandani
Erfan Modir
Clint Moore
Lynette Morehead-Crum
Jordan Mott
Manish Nadkarni
Hamed Nawabi
Karen Nelsen
Hoi Wing Ng
Hiep Nguyen
Suzanne O'Brien
Julio Orozco
Rusty Paap
Kamini Patel
Jason Pham
Pam Rodgers
Linda Rodgers
Mark Sanders
Kaajal Shahani
Chaya Shahar
Hema Shankar
Nisha Sharma
Jordan Shea
James Shin
Lisa Thompson
Grace Tsang
Mary Ann Wallace

Jessa Walsh
Yoga Yang
The Buchanan Team
The Carrasco Team
The Eddie Oberoi Team
DUO - Karen Fryling
& Rebecca Johnson
The Faris-Taylor Team
The Genesis Team
The Gluhaich Team
Grant, Griffith & Jones
The Husain Team
Julie Cassel & Jaime Jones
The Martin Team
The Mini Kalkat Team
The Moridi Team
The Nahouraii Group
The Nicoli Group
The Ohadi Group
Orion Partners
Padilla Group
The Slater Thomson Team
The Tse Group
The Troyer Group
The Villeneuve Team
The Vong Group
The Keith Walker Team

TOP RANKED AGENTS AND TEAMS FOR UNITS



Sean Chen
Hugo De Hoyos
Max de Vries
Trang Dunlap

Michelle Francis
Jason Lococo
Edith Miller
Jordan Mott

Karen Nelsen
Jason Pham
Mark Sanders

The Carrasco Team
The Troyer Group
The Tse Group

Arts & Entertainment

A weekly guide to music, theater, art, culture, books and more, edited by Karla Kane

Music@Menlo offers a venue for every listener

Chamber music festival returns to live performances in a brand-new venue, plus a virtual viewing option

By Heather Zimmerman

Music@Menlo is going above and beyond to live up to its 2021 theme, “Gather,” with the summer chamber music festival offering a venue for just about every listener.

The 2021 edition of the festival will feature in-person concerts, with options to attend performances indoors or outdoors — or virtually.

Music@Menlo is presenting nine concert programs over three weekends, kicking off Friday, July 16, and running through Sunday, Aug. 1, with live performances taking place at Menlo School in Atherton.

“It’s a little more work for the staff and also for the musicians,” Wu Han, Music@Menlo’s co-artistic director, said of the multiple performance options. “But we miss playing concerts so, so much. Everybody is totally understanding of the importance of gathering and being together, and having a sense of community. So we’re giving all those options.”

Music@Menlo has a lot to celebrate this year. Not only does the 2021 festival mark a return to in-person concerts, but when audiences and artists do come together indoors, it will be in the Spieker Center, a brand-new concert hall on the Menlo School campus.

“It’s so beautiful. The interior is just glorious. The school and the design team and Music@Menlo all worked together so the venue is dead quiet and we can do recordings. The stage has wood paneling so the sound is warm,” Wu Han said.

She described the recent day that the festival artists first arrived on campus, where music could be heard drifting from the various classrooms into the



Courtesy Craig Cozart/Music@Menlo

Music@Menlo’s co-artistic directors, cellist David Finckel and pianist Wu Han, will perform during the festival’s opening weekend in Atherton.

courtyard near the new hall as the artists rehearsed. People on campus were drawn to the courtyard, gathering around the first opportunity to hear festival music in person in two years.

The 2021 festival theme was inspired by Patrick Castillo’s composition “Gather,” commissioned by the festival to commemorate the Spieker Center’s opening.

Castillo is Music@Menlo’s audience engagement director and has been with the festival from its start nearly 20 years ago, but festival audiences may not know that Castillo is also a composer, Wu Han said. On a bittersweet note, this is Castillo’s last year with Music@Menlo, as he will

be joining the New York Philharmonic as its vice president of artistic planning.

“Gather” was commissioned for last year’s festival, which ended up taking place entirely online due to the pandemic. With the return of in-person performances in 2021, the title of the piece seemed a natural fit for this year’s theme, Wu Han said. At two and a half minutes, Castillo’s piece is short, but it captures the emotions of an uncertain year.

The piece, written for piano and cello, begins with a kind of murmuring, with the cello and piano not quite together. Then it builds on the tune of a well-known hymn, “Shall we gather at the

river” to create a sense of unity.

“It’s very philosophical. He wrote it in June of 2020 at the height of the pandemic. In the beginning it is deliberately a little confusing, a little uncertain, then this hymn shows up and we are all gathering again. ... It’s kind of unexpected; with a hall opening you’re usually expecting a big bang. It’s very, very intriguing and quite beautiful,” Wu Han said.

Wu Han, a pianist, and her co-artistic director, David Finckel, a cellist, will be featured in the opening program, along with pianist Ji Na Kim; violist Matthew Lipman; violinists Kristin Lee and Arnaud Sussman; and bassist Scott Pingel.

“Gather” leads the July 16 opening program, which also features, for a “big bang,” Johannes Brahms’ “Scherzo in C Minor” from the F-A-E Sonata and “The Trout” by Franz Schubert’s (also known as “Quintet in A major for Piano, Violin, Viola, Cello, and Bass.”)

The pieces were chosen to contrast with “Gather” and also for the symbolism behind the works. The Brahms Scherzo is one of four movements in a sonata written collaboratively by Brahms, Schumann and Albert Dietrich as a gift for violinist Joseph Joachim, Wu Han said, noting that the Scherzo is the most performed movement from the work and it helped cement Brahms’

status as a master.

“It’s very declamatory, very celebratory, and it has a friendship story behind it. So it’s a perfect sort of opening tribute to all the friendship, to the community and also to the reopening after the pandemic,” Wu Han said.

The Schubert piece was written over a short period of time for a chamber performance at a patron’s country house party, and included, at the patron’s request, variations on another of Schubert’s compositions.

The festival’s overall programming this year offers a lot of intensity, with dramatic, emotional works and joyful ones, according to Wu Han.

“There are a lot of chamber music favorites,” she said. But there’s also a chance to discover some works that aren’t as well known.

The festival’s second concert program, on July 17, concludes with a piano trio by 20th-century composer Arno Babajanian that Wu Han calls “powerful.” The program also features Mozart’s “Piano Quartet in G Minor” (K. 478) and Schubert’s “Fantasy in F minor for Piano, Four Hands.” The roster for the July 17 concert features pianists Gilbert Kalish, Hyecheon Park and Wynona (Yinuo) Wang; cellists Dmitri Atapine and Finckel; violinists Kristin Lee and Tien-Hsin Cindy Wu; and violist Matthew Lipman.

The final program of the opening weekend, on Sunday, July 18, features violinists Lipman and Wu; violinists Yeri Roh, James Thompson and Angela Wee; cellists Atapine, Audrey Chen and Sterling Elliott; and pianist Park performing Janacek’s “Violin Sonata” (1914-1915; rev. 1916-1922), Gyorgy Liget’s “Sonata for Solo Cello” and Brahms’ “String Sextet no. 1 in B-flat major, op. 18.”

(continued on page 22)



Spieker Center, Menlo School’s new concert hall, will house Music@Menlo’s indoor performances.



Courtesy Do Hyung Kim/Music@Menlo

Cellist Dmitri Atapine will be featured at Music@Menlo, including at the July 17 concert during the festival’s opening weekend.

Music@Menlo

(continued from page 21)

As musicians and listeners alike enjoy live performances, the online component offers another option for audiences to experience the festival — one that is likely to stay in place, too.

Music@Menlo's 2020 festival and its 2020-21 season offered an array of online performances and lectures that reached a broader audience than ever before, Wu Han said, with data showing that international listeners as well as local ones attended the

performances. With the success of Music@Menlo's online programming, and the importance of ensuring greater accessibility for audiences who may not be able to attend in person, the festival plans to continue offering online programming, according to Wu Han. She also said that she has heard from listeners that Music@Menlo's online offerings brought them comfort and inspiration during some of the most uncertain times.

Whether in person or online, she said this year's programming aims to bring listeners together to both reflect and celebrate, offering

"reminders of how beautiful music can be, and how beautiful this world can be. I found myself in the last year and a half needing music more than ever. It gives you beauty; it gives you hope."

Vaccinations are required for indoor concerts, which will also offer socially distanced seating.

Each program will be performed twice: once indoors and once outdoors. Indoor performances will be presented online.

For more information, visit musicatmenlo.org.

Email Assistant Editor Heather Zimmerman at hzimmerman@paweekly.com.



Courtesy Lauren Desberg/Music@Menlo

Violinist Kristin Lee will be featured at Music@Menlo, including performances at the festival's opening weekend.



Courtesy Brandon Patoc/Music@Menlo

Bassist Scott Pingel will perform at Music@Menlo, including the festival's opening program on July 16.

Music@Menlo
CHAMBER MUSIC FESTIVAL AND INSTITUTE

2021 SUMMER FESTIVAL

Gather

JULY 16–AUGUST 1

MENLO SCHOOL, ATHERTON.

THREE WEEKENDS OF LIVE CHAMBER MUSIC
INDOOR & OUTDOOR CONCERTS
EIGHTEEN WORLD-CLASS ARTISTS

TWO FREE AFTERNOON PERFORMANCES

WWW.MUSICATMENLO.ORG | 650.331.0202

Magical Bridge summer concerts return July 16

Palo Alto family band Camacu kicks things off with a free show

By Karla Kane

Live music will soon be back at Magical Bridge playground in Palo Alto's Mitchell Park. Sensory-friendly, free, accessible concerts for kids and families will be held Friday evenings starting at 6 p.m., July 16 through Sept. 3.

Kicking things off this Friday is Palo Alto family band Camacu, which plays a mix of world music.

Other upcoming artists are: Andy Z (July 23), John Henry's Farm (July 30), James Henry House of Samba Kids (Aug. 6), Angels on Stage (Aug. 13), Soul Providers (Aug. 20), Noise Lab Music Workshops (Aug. 27), and Lori and R.J. (Sept. 3).

More information on Magical Bridge playgrounds is available at magicalbridge.org and facebook.com/MagicalBridge.



Courtesy Camacu

Palo Alto family band Camacu, pictured here performing at Palo Alto World Music Day in 2019, opens a series of weekly concerts at Magical Bridge Playground in Palo Alto with a performance on July 16.

Email A&E Editor Karla Kane at kkane@paweekly.com.

De Martini Orchard
Quality Produce
66 N. San Antonio Rd., Los Altos • 650-948-0881 • DeMartiniOrchard.com

<p>CANTALOUPE SWEET & TASTY 49¢ LB</p>	<p>LOCALLY GROWN CORN IS IN WHITE CORN LJB FARMS - SAN MARTIN</p>	<p>ORGANIC LOCAL BROCCOLI-NINOS VERY TENDER \$1.49 LB</p>
<p>KENT MANGOES SWEET & CREAMY 99¢ EACH</p>	<p>3 EARS IN HUSK FOR 99¢</p>	<p>ORGANIC LOCAL BABY BOK CHOY STIR FRY TIME \$1.49 LB</p>
<p>NORTHWEST JUMBO SIZE CHERRIES SWEET CROP \$4.99 LB</p>		<p>ORGANIC LOCAL ZUCCHINI EXTRA FANCY \$1.99 LB</p>
<p>SEEDLESS WATERMELON SUGAR SWEET 49¢ LB</p>	<p>CHECK OUT OUR NEW ONLINE STORE SHOP ONLINE FOR SAME-DAY PICK-UP OR DELIVERY NO SUBSCRIPTIONS AND HAND PICKED BY OUR TRAINED STAFF. SHOPDEMARTINI.COM</p>	<p>ORGANIC HEIRLOOM TOMATOES GREAT FLAVOR \$4.99 LB</p>

OPEN DAILY 8AM-7PM • PRICES EFFECTIVE 7/14 thru 7/27



1975 Webster St, Palo Alto
OFFERED AT \$18,280,000
GLORIA YOUNG
650.380.9918 · LIC. #01895672
JOHN YOUNG
650.862.2122 · LIC. #02036387



Orchard Park, Palo Alto
STARTING AT \$4,530,900
MICHAEL DREYFUS
650.485.3476 · LIC. #01121795
NOELLE QUEEN
650.427.9211 · LIC. #01917593



131 Peter Coutts Cir, Stanford
OFFERED AT \$1,098,000
CHRIS IVERSON
650.450.0450 · LIC. #01708130



170 Sunrise Dr, Woodside
OFFERED AT \$5,995,000
CHRIS IVERSON
650.450.0450 · LIC. #01708130



152 Dunsmuir Way, Menlo Park
OFFERED AT \$2,398,000
OMAR KINAAN
650.776.2828 · LIC. #01723115



1277 Woodland Ave, Menlo Park
OFFERED AT \$2,398,000
OMAR KINAAN
650.776.2828 · LIC. #01723115



32 East Portola Ave, Los Altos
OFFERED AT \$3,465,000
SAMIA CULLEN
650.384.4392 · LIC. #01180821



1219 Portland Ave, Los Altos
OFFERED AT \$3,399,000
TOM MARTIN
408.314.2830 · LIC. #01272381



1189 S. Springer Rd, Los Altos
OFFERED AT \$2,895,000
THE CAMPI GROUP
650.917.2433 · LIC #00600311



682 N. San Antonio Rd, Los Altos
OFFERED AT \$2,398,000
OMAR KINAAN
650.776.2828 · LIC. #01723115



26 4th Street #1, Los Altos
OFFERED AT \$1,485,000
THE CAMPI GROUP
650.917.2433 · LIC #00600311



388 Circuit Way, Mountain View
OFFERED AT \$1,698,000
LAURA MCCARTHY
650.269.1609 · LIC. #01895605



179 Sherland Ave, Mountain View
OFFERED AT \$1,485,000
TOM MARTIN
408.314.2830 · LIC. #01272381



575 Beresford Ave, Redwood City
OFFERED AT \$3,798,000
ANNETTE SMITH
650.766.9429 · LIC. #01180954



306 Hillview Ave, Redwood City
OFFERED AT \$1,750,000
MICHAEL DREYFUS
650.485.3476 · LIC. #01121795
NOELLE QUEEN
650.427.9211 · LIC. #01917593



3553 Deer Park Ct, Santa Rosa
OFFERED AT \$1,068,000
PENELOPE HUANG
650.281.8028 · LIC. #01023392

MORE LISTINGS AT [GOLDENGATESIR.COM](https://www.goldengatesir.com)

Each office is independently owned and operated

Palo Alto Office
728 Emerson St

Menlo Park Office
640 Oak Grove Ave

Los Altos Office
195 S. San Antonio Rd

Woodside Office
2989 Woodside Rd

Redwood City Office
555 Middlefield Rd

San Carlos Office
1250 San Carlos Ave 101

Burlingame Office
360 Primrose Rd

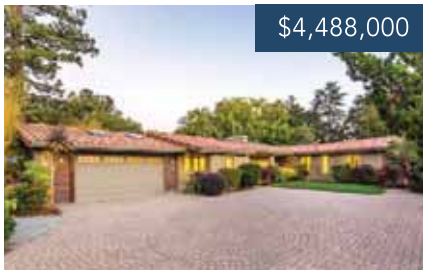
Los Gatos Office
663 Blossom Hill Rd

OTHER OFFICES BELVEDERE-TIBURON · BERKELEY · DANVILLE · LAFAYETTE · MILL VALLEY · MONTCLAIR · NAPA · NOVATO · OAKLAND · ROSS VALLEY · SAN RAFAEL · SAUSALITO · STINSON BEACH



COMMITTED TO TRANSPARENCY

2.5% Commission Paid to Buyer's Agent • Waived if DeLeon Buyer's Agent



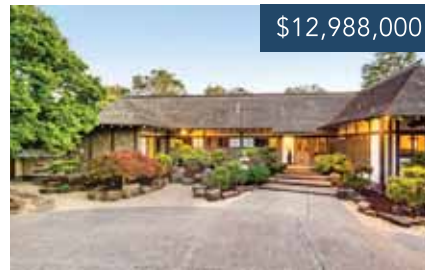
\$4,488,000

4090 El Cerrito Road, Palo Alto
4 Bd | 4 Bth (3 Full, 2 Half)
www.4090ElCerrito.com



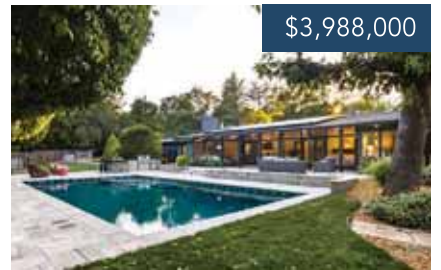
\$2,988,000

780 Knoll Drive, San Carlos
6 Bd | 4.5 Bth
www.780Knoll.com



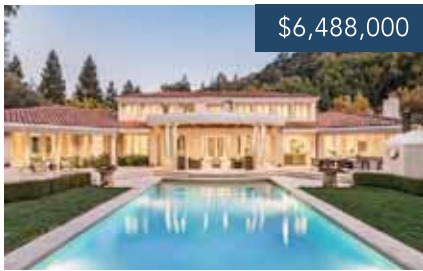
\$12,988,000

33 Barry Lane, Atherton
5 Bd | 6 Bth
www.33Barry.com



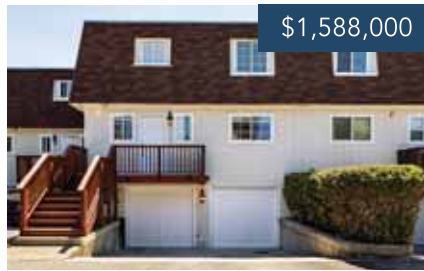
\$3,988,000

135 Woodside Drive, Woodside
4 Bd | 4 Bth
www.135Woodside.com



\$6,488,000

11801 Francemont Dr, Los Altos Hills
5 Bd | 8 Bth (6 Full, 2 Half)
www.11801Francemont.com



\$1,588,000

135 E O'keefe St #3, Menlo Park
3 Bd | 2.5 Bth
www.135EOKeefe3.com



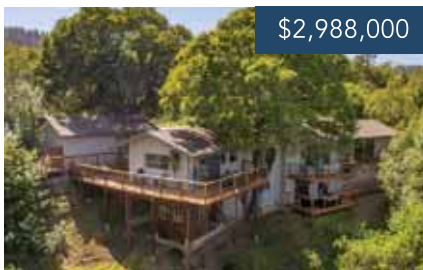
\$2,488,000

1884 Miramonte Ave, Mountain View
3 Bd | 2.5 Bth
www.1884Miramonte.com



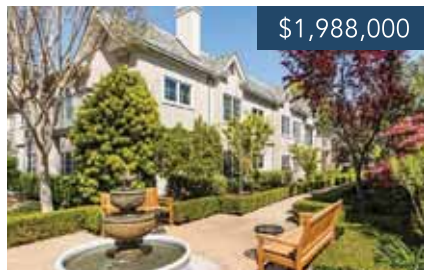
\$2,488,000

1074 Moffett Circle, Palo Alto
4 Bd | 2 Bth
www.1074Moffett.com



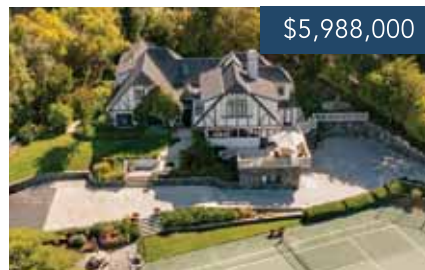
\$2,988,000

255 Old Spanish Trail, Portola Valley
4 Bd | 3.5 Bth
www.255OldSpanishTrail.com



\$1,988,000

1 W. Edith Ave. #C116, Los Altos
3 Bd | 2 Bth (for residents aged 55+)
www.1WEdithC116.com



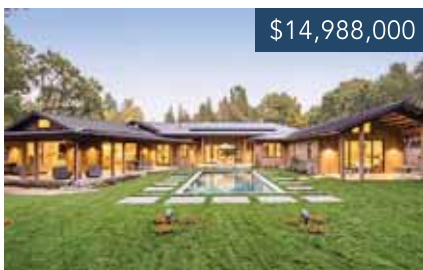
\$5,988,000

23475 Camino Hermoso Dr, Los Altos Hills
5 Bd | 6 Bth (4 Full, 2 Half)
www.23475CaminoHermoso.com



\$3,588,000

2072 Ashton Avenue, Menlo Park
5 Bd | 4.5 Bth
www.2072AshtonAve.com



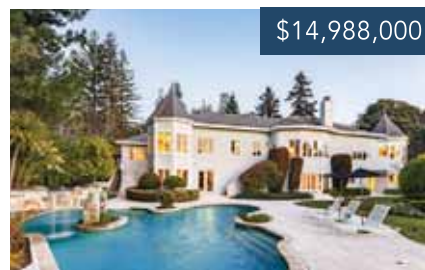
\$14,988,000

199 Mapache Dr, Portola Valley
5 Bd | 6.5 Bth
www.199Mapache.com



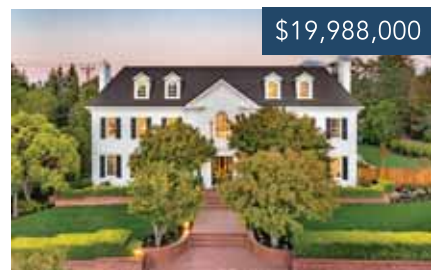
\$39,998,000

27500 La Vida Real, Los Altos Hills
5 Bd | 12 Bth (7 full, 5 half)
www.27500LaVida.com



\$14,988,000

97 Ridge View Drive, Atherton
6 Bd | 7.5 Bth
www.97RidgeViewDr.com



\$19,988,000

303 Atherton Avenue, Atherton
7 Bd | 8.5 Bth
www.303AthertonAve.com



DeLeon Realty

We don't get great listings.
We make great listings.

[CONTACT US NOW](#)



BEFORE



AFTER

Michael Repka | 650.900.7000 | DRE #01854880
michael@deleonrealty.com | www.deleonrealty.com | DRE #01903224



780 KNOLL DRIVE SAN CARLOS



BRIGHT, SPACIOUS, AND AN INCREDIBLE LOCATION

On an expansive lot of nearly .30 acres on a coveted street in sought-after Howard Park rests this bright, spacious 6-bedroom, 4.5-bathroom home. Set away from the street by an extended paver driveway, this home welcomes you with beautifully refinished hardwood floors, fine millwork, and tremendous natural light from numerous windows and skylights. Almost 3,700 square feet of interior space begins in the living room with a centerpiece fireplace, while the dining room adjoins the nearby kitchen for easy entertaining. Downstairs, the comfortable family room opens to the backyard patio for indoor/outdoor living. The primary suite provides a welcoming retreat, while the home's additional bedrooms offer comfortable accommodations for family and friends, with the added convenience of easily converting to office space. A spectacular deck highlights the backyard that offers outstanding space for outdoor enjoyment with views of the hills, a towering Mediterranean cork oak, planter boxes perfect for a vegetable garden, and a hot tub. Adding the finishing touch is a location served by the acclaimed San Carlos Elementary school district (buyer to verify eligibility) that also puts you mere moments to numerous San Carlos landmarks including Burton Park, and the shops and restaurants of downtown San Carlos and Laurel Street.

OPEN HOUSE: SATURDAY & SUNDAY 1:30 PM - 4:30 PM

www.780Knoll.com

Offered at \$2,988,000

Listed by Alexandra Wilbur and Francis Lopez of the DeLeon Team, the #1 Team in San Mateo County

Data from BrokerMetrics® based on MLS sales from January 1, 2020, to December 31, 2020, in San Mateo County, residential properties, with no off-MLS sales included in the rankings.

For more information contact: Alexandra Wilbur, DRE #01926475 | alex@deleonrealty.com
Francis Lopez, DRE #02119541 | 650.397.8988 | francis@deleonrealty.com
Managing Broker: Michael Repka, DRE #01854880 | www.deleonrealty.com | DeLeon Realty, Inc. | DRE #01903224

Eating Out

Palo Alto author publishes plant-forward recipe bible



Anne-Marie Bonneau's new book, 'The Zero-Waste Chef,' offers a blueprint for a sustainable kitchen

By Angela Swartz

Turn fruit peels left over from your apple crumble into vinegar. Keep a leftover loaf from going to waste by making Mexican hot chocolate bread pudding.

These are just a couple of the creative ideas in Palo Alto resident Anne-Marie Bonneau's first book: "The Zero-Waste Chef." The book, released in April, includes 75 vegan and vegetarian recipes and tips for cooking with food scraps, creating fermented goodies — like from-scratch ketchup and preserved lemons — or simply inverting a plate over leftovers rather than using plastic wrap to keep them fresh in the fridge.

Bonneau, who moved to the Bay Area in 1998 during the dot-com boom, said she went "zero waste" in 2011 when she discovered only 9% of plastic is actually recycled and 40% of food goes unused

in the U.S. every year. She began shopping at farmers markets "religiously" (she even transfers berries to her own jars to save cartons) and making food with fewer ingredients.

She injects humor, and storytelling, into it all. For example, she recounted during our interview how, after her younger daughter Charlotte stormed off after an argument, her biggest act of rebellion was to return home with a plastic water bottle.

Bonneau is also practical. She emphasizes that being free of waste is merely a goal. She notes that if everyone cut waste by 10%, it'd be better than if a few people were zero waste. "If everybody did a little bit, we'd be in much better shape," she explains. She attributes her ability to live by strict rules to her Catholic upbringing



Anne-Marie Bonneau

in the Toronto area. The book is an offshoot of her blog, which she started in 2014.

We caught up with Bonneau to discuss her book, glean her recipe for sourdough sticky buns and find out where to buy peaches on the Peninsula.

This interview has been edited for length and clarity.

How did this book come about? How long did it take you to write it, and where did you write it?

It started in 2011 when I was reading about plastic pollution in the oceans. I had no idea it was such a massive problem. I had always recycled; I assumed it'd be made into new stuff.

My daughter Mary Katherine started the blog Plastic Free Chef. She went to university in Canada and found that

blogging was too hard to keep up. I asked if I could take over her blog and she said, "No, start your own blog!" So I did. I thought it'd be nice if it became a book someday. ... The book took a long time; I washed 5 million dishes when I wrote it.

Writing the actual book, I did quite a bit at the Mitchell Park Library (in Palo Alto). There are no distractions there and you're allowed to take a drink there. I did a lot of writing at Philz on Forest (Avenue).

When did your passion for cooking and the environment begin?

When I was a teenager I helped my dad build a solar thermal heater for our pool. ... And that thing worked really well; the pool was usually about 80 degrees. We saved \$1,000 every summer. ... I think that just made a big impression. Plus,

(continued on page 27)



Anne-Marie Bonneau's new book, "The Zero-Waste Chef," top, includes recipes such as sparkling tepache, left, and eat-all-your-vegetables pancakes, right. Courtesy Penguin Random House.



Cooks at The Counter serve up mini burgers with asiago cheese, scallions, peanut sauce carrots and sprouts with a side of sweet potato fries in 2014.

The Counter plans to close Palo Alto eatery after 15 years

Franchise owner looks toward cloud kitchen to stave off high overhead costs

By Lloyd Lee

After serving up custom-made gourmet burgers in Palo Alto for 15 years, The Counter is closing its doors at 369 California Ave.

Peter Katz, a managing partner at Counter Intelligence, which owns the northern California franchise of The Counter, told this news organization on Monday that the Palo Alto site will shutter by the end of this month.

The business experienced a lot of hardship after being limited to takeout and delivery service during much of 2020, Katz said.

When it came time to renew the California Avenue lease with Premier Properties, Counter Intelligence initially declined, given the high overhead costs and challenges of the moment, Katz said.

"There was a lot of uncertainty," Katz said. "We were unable to make that commitment at the time."

As business stabilized, Counter Intelligence tried to renew the lease for the 2,675-square-foot restaurant, according to Katz, but the landlord had already found a new tenant. (Katz could not disclose further information about the new tenant.)

The Counter's Palo Alto site was the second to open and the first franchise after the restaurant was founded in Santa Monica by Jeffrey Weinstein and Craig Albert in 2003.

Katz, who was a sales and marketing executive looking to reroute his career at the time, was introduced to Weinstein. Katz said he saw potential in a restaurant that emphasized customer choice and premium quality burgers.

"I got introduced to Jeff, had a burger at the Santa Monica restaurant with him and his partner, and we did a deal on the back of a napkin," Katz said. "At that point, they hadn't even received the approval to franchise."

Katz attained the rights to build out franchises throughout northern California, creating Counter Intelligence in 2005 and later opening The Counter's first franchise location in Palo Alto in August 2006.

"There were lines up and down the block," Katz said about the restaurant's opening.

Katz's firm eventually expanded the restaurant into seven locations and one sub-franchise in Fremont. (Currently, The Counter's website lists five locations in the Bay Area and one opening soon.)

Katz said his firm has already signed a lease in San Francisco to open a cloud kitchen, also known as a "ghost kitchen" version of the restaurant—a growing trend that allows restaurants to operate as an online delivery-only service while avoiding the high overhead costs of a traditional brick-and-mortar location.

Katz said he hasn't given up on opening another indoor-dining location for The Counter. In the meantime, The Counter's closest location to Palo Alto is at 2580 W. El Camino Real in Mountain View.

"Our preference would be more brick and mortar, but the economics have to be right," Katz said. ■

Email Editorial Assistant Lloyd Lee at lle@paweeekly.com.

Zero Waste Chef

(continued from page 26)

I've always liked making things. I actually didn't cook at all until I had kids. My mum said when I was growing up I would rather not eat than have to actually cook something.

There are some very creative concepts in this book. How did these come about?

I thought of the book as a puzzle where things fit together. I wanted to have one recipe you would start with but not end with. If you make something from scratch every time you cook, that's a lot of work.

Which recipe in the book is your favorite or one you cook most often?

I especially love the sourdough sticky buns. I made them over and over and over for the book. One day Charlotte said to me, "Will you please stop making these?" I could text the neighbor and say, "Come and taste this" (while testing recipes for the book). It would have been really hard to do all of that during lockdown.

You describe yourself in the book as a "sourdough disciple." Why do you make your own bread and why should I?

Last year all of the sudden the stats on my blog for sourdough just went crazy. I learned the stores didn't have any yeast (sourdough doesn't require added yeast). If we don't want to make bread, don't make bread, but I love to make bread. I started making bread when Mary Katherine was 18 months and she's 26 now. It makes your home smell good, it tastes

delicious. It's a long process, but you're not working on it the whole time. It's alive, it's fermented, so it's filled with live bacteria and yeast; it puts you in tune with the natural world more.

Has your life improved for the better since you've tried to go zero waste?

Big time. The food tastes better. I'm a much more creative cook than I used to be and I think it's because I have these parameters I have to live by; I use all the parts of stuff.

Where do you do your shopping?

The California Avenue Farmers Market on Sundays. The food is fabulous and there's a huge selection. The best peaches are at that one. Sunnyvale's (farmers market) for apples. I go to The Willows Market (in Menlo Park) or Piazza's (in Palo Alto). For bulk stuff, I go to Country Sun (on California Avenue).

What are some food/sustainability blogs or books you've enjoyed?

I'm reading Rebecca Prince-Ruiz's "Plastic Free." I urge people to read "The New Climate War" by Michael E. Mann. He's a climatologist and a great communicator on the climate crisis. Elizabeth Kolbert's "Under a White Sky." Anything by Michael Pollan (his book "This Is Your Mind on Plants" was released July 6).

Bonnaeu will host an author talk and book signing at a home in the Los Altos Hills on Tuesday, July 20, at 7 p.m. This will be her first in-person talk since the pandemic hit. Sign up online at tinyurl.com/zerowastecheflosaltos. ■

Email Staff Writer Angela Swartz at aswartz@almanacnews.com.

REALTORS, DEVELOPERS, DREAM-BUILDERS

When selling your home, give us the chance to show you the difference we can make!



Y YOUNG PLATINUM GROUP

Golden Gate Sotheby's INTERNATIONAL REALTY

Gloria Young DRE# 01895672
Gloria@YoungPlatinumGroup.com
650.380.9918

John Young DRE# 02036387
John@YoungPlatinumGroup.com
650.862.2122

www.YoungPlatinumGroup.com

deleon PLATINUM OUR TEAM IS IN MOTION FOR YOU

DELEON REALTY, INC.
Michael Repka | CEO & Managing Broker | DRE #01854880
650.900.7000 | Info@deleonrealty.com | www.deleonrealty.com | DRE #01903224



1221 COTTON STREET MENLO PARK



SPACIOUS AND STYLISH IN CENTRAL MENLO

On a lot of almost one-quarter acre in the sought-after neighborhood of Central Menlo, this bright and spacious 3-bedroom, 2-bathroom home offers comfortable living space and a convenient floorplan. A brick pathway leads through a garden entrance to the front door flanked by leaded glass sidelights, and inside, stylish appointments include refinished hardwood floors, fine millwork, divided light windows, and plantation shutters. A fireplace centers the expansive living room, the eat-in kitchen offers appliances from Viking, Bosch, and Jenn-Air, and the dining room opens to a covered brick patio perfect for indoor/outdoor entertaining. The sizable master suite enjoys access to the backyard, where privacy hedges line the perimeter and a lush lawn provides great space for outdoor enjoyment. Just moments from the Atherton border, this incredible location is also convenient to downtown Menlo Park, downtown Palo Alto, and Stanford University. Plus, children may attend acclaimed Menlo Park schools including Hillview Middle, which is approximately ½-mile away (buyer to verify eligibility).

OPEN HOUSE: SATURDAY & SUNDAY 1:30 PM - 4:30 PM

www.1221Cotton.com

Offered at \$3,498,000

Listed by Audrey Sun of the DeLeon Team, the #1 Team in Menlo Park

Data from BrokerMetrics © based on MLS sales from January 1, 2020, to December 31, 2020, in Menlo Park, residential properties, with no off-MLS sales included in the rankings.

2.5% Commission Paid to Buyer's Agent • Waived if DeLeon Buyer's Agent

For more information contact: Audrey Sun, DRE #01933274 電話: 650.785.5822 我們精通國語和粵語
Managing Broker: Michael Repka, DRE #01854880 | www.deleonrealty.com | DeLeon Realty, Inc. | DRE #01903224



50 CHEYENNE POINT PORTOLA VALLEY



OVER AN ACRE WITH JAW-DROPPING VIEWS

Nestled on over an acre amongst the resplendent beauty of Portola Valley lies this bright, inviting home on a peaceful non-through street. A breezy ambiance encircles you from the moment you step inside, with a soaring cathedral ceiling crowning the living room, and a spectacular wall of windows showcasing jaw-dropping views of the Windy Hill Open Space Preserve. Nearly 2,700 square feet of interior space includes highlights such as the kitchen with appliances from Miele and Sub-Zero, the dining room with access to a patio for indoor/outdoor entertaining, and a focal-point fireplace in floor-to-ceiling stone centering the living room. Accommodations include 4 bedrooms and 2.5 bathrooms, with multiple bedrooms enjoying access to the outdoors. And the backyard evokes the mood of a mountainside retreat, accentuated by the pool with views of the home's verdant, flourishing surroundings. Feel far removed from the fast pace of Silicon Valley, yet still enjoy a location moments to famous Roberts Market, a short drive to Interstate 280, and just over one-half mile to the acclaimed Ormondale Elementary School.

OPEN HOUSE: SATURDAY & SUNDAY 1:30 PM - 4:30 PM

www.50Cheyenne.com

Offered at \$3,488,000

Listed by Michael Repka and Alexandra Wilbur of the DeLeon Team, the #1 Team in San Mateo County

Data from BrokerMetrics © based on MLS sales from January 1, 2020, to December 31, 2020, in San Mateo County, residential properties, with no off-MLS sales included in the rankings.

2.5% Commission Paid to Buyer's Agent • Waived if DeLeon Buyer's Agent

For more information contact: Alexandra Wilbur, DRE #01926475 | 650.459.3888 | alex@deleonrealty.com
Managing Broker: Michael Repka, DRE #01854880 | www.deleonrealty.com | DeLeon Realty, Inc. | DRE #01903224

“Amazing knowledge of the city, the candidates and the issues...Truly a public service to the citizens of Palo Alto.”

— CALIFORNIA JOURNALISM AWARDS JUDGE’S COMMENTS



**HELP US CONTINUE
BRINGING YOU
AWARD-WINNING
JOURNALISM.**



**Become a member
today and uphold
democracy tomorrow.**

**Palo Alto
Weekly**



Join us at PaloAltoOnline.com/subscribe.

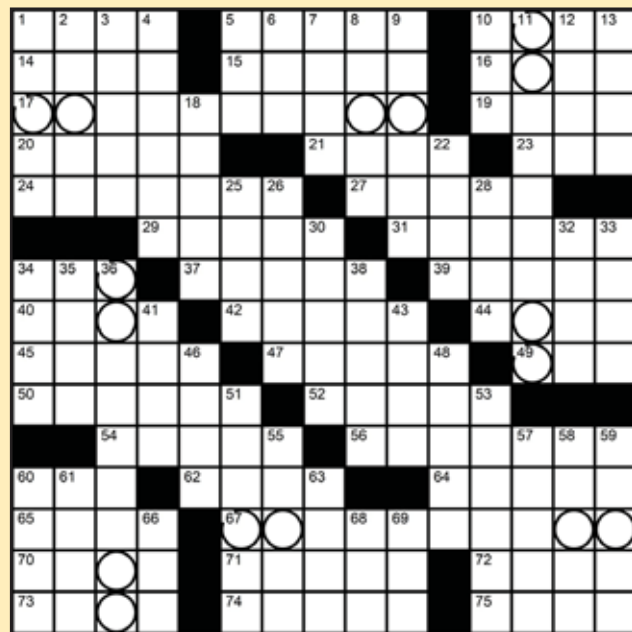


Checks for \$120 annual memberships may also be mailed to 450 Cambridge Ave., Palo Alto 94306

Across

- 1 11th graders' exam (abbr.)
- 5 "Now, ___ from our sponsor"
- 10 Hill's high point
- 14 "It's ___ Quiet" (Bjork remake)
- 15 Doritos flavor
- 16 Any of the three "Survivor" motto words
- 17 Place to make a vinyl purchase
- 19 He'll give you a ride, on "The Simpsons"
- 20 Muse for Keats
- 21 Norse pantheon chief
- 23 Oedipus ___
- 24 "Scarface" director Brian
- 27 Mushroom with white buds
- 29 Second side in a game, perhaps
- 31 Cherry ___ (Ben & Jerry's offering)
- 34 "Can't Fight This Feeling" band ___ Speedwagon
- 37 A little above the pitch
- 39 Drum kit cymbal stand
- 40 Stumbles
- 42 "... the bombs bursting ___"
- 44 ___ speak (as it were)
- 45 Start a meal
- 47 Shoelace tip
- 49 "Shiny Happy People" group
- 50 Casino worker
- 52 Camera that gets strapped on
- 54 Name, in Latin
- 56 Vacationing traveler
- 60 Ray gun sound
- 62 Came up short
- 64 "___ just not, please?"
- 65 "___ please the court ..."
- 67 Protester's forum
- 70 Wine valley
- 71 Spanish footballer Sergio
- 72 Miners' quarries
- 73 Acceptability, for short
- 74 Painter Gustav who often used gold leaf
- 75 Rodeo item that I can't seem to properly get around the theme answers

"Go Get 'Em" — actually, this is my first rodeo. By Matt Jones

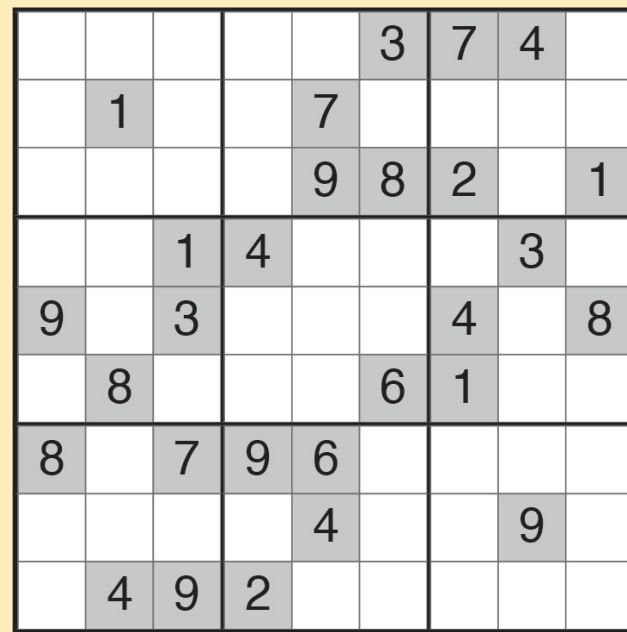


Answers on page 15.

Down

- 1 Read carefully (over)
- 2 "The Jungle Book" tiger ___ Khan
- 3 Music licensing org.
- 4 Greet with a honk
- 5 "What next?"
- 6 Existed
- 7 Eight, in El Salvador
- 8 Half a state name
- 9 Olympic athlete's violation
- 10 Guac ingredient, casually
- 11 Scent after the first rain in a while
- 12 Mononymic Art Deco designer
- 13 Microsoft system launched in 2001
- 18 Acting jobs

This week's SUDOKU



Answers on page 15.

www.sudoku.name

- 22 "The Daily Show" host Trevor
- 25 Half a Hawaiian fish?
- 26 Kitchen appliance manufacturer
- 28 Khloe's mom
- 30 "Thatcherites" singer Billy
- 32 "... can't believe ___ the whole thing!"
- 33 Tiniest speck
- 34 "SNL" cast member Chris
- 35 Lake on four states and a province
- 36 Component of some church instruments
- 38 First show
- 41 Grain storage tower
- 43 Govt. auction auto, perhaps
- 46 "Finding Dory" fish
- 48 It may be called

- 51 Edit considerably
- 53 One who talks the talk
- 55 Tibet's neighbor
- 57 Opening notes
- 58 Win all the games
- 59 Brief
- 60 Most of a penny's makeup
- 61 From a long way
- 63 Singer Lovato who announced their new pronouns in 2021
- 66 Lincoln's son
- 68 Chow down, slangily
- 69 Amphibious WWII vessel

©2021 Jonesin' Crosswords (jonesincrosswords@gmail.com)

**Today's news,
sports &
hot picks**



**The local
news you
care about
is one click
away.**

**Receive
information on
what's happening
in your community
by email every day.**

**Sign up today at
PaloAltoOnline.com/
express**

Employment

The Palo Alto Weekly offers advertising for Employment, as well as Home and Business Services.

If you wish to learn more about these advertising options, please call **650.223.6582** or email **digitalads@pawebly.com**.

Marketplace

The Palo Alto Weekly offers advertising for Home Services, Business Services and Employment.

If you wish to learn more about these advertising options, please call **650.223.6582** or email **digitalads@pawebly.com**.

Public Notices

995 Fictitious Name Statement

VINTAGE STAPLES
FICTITIOUS BUSINESS NAME STATEMENT
File No.: FBN676372
The following person (persons) is (are) doing business as:
Vintage Staples, located at 21779 Congress Springs Lane, Saratoga, CA 95070, Santa Clara County. This business is owned by: An Individual. The name and residence address of the registrant(s) is(are):
ANGELA KWAN
21779 Congress Springs Lane
Saratoga, CA 95070
Registrant has not yet begun to transact business under the fictitious business name(s) listed above. This statement was filed with the County Clerk-Recorder of Santa Clara County on June 24, 2021. (PAW July 2, 9, 16, 23, 2021)

997 All Other Legals

NOTICE OF PETITION TO ADMINISTER ESTATE OF: DOUGLAS KROIS
Case No.: 21PR190385
To all heirs, beneficiaries, creditors, contingent creditors, and persons who may otherwise be interested in the will or estate, or both, of DOUGLAS KROIS. A Petition for Probate has been filed by: SHARRON M. REED in the Superior Court of California, County of SANTA CLARA. The Petition for Probate requests that: SHARRON M. REED be appointed as personal representative to administer the estate of the decedent. The petition requests authority to administer the estate under the Independent Administration of Estates Act. (This authority will allow the personal representative to take many actions without obtaining court approval. Before taking certain very important actions, however, the personal representative will

be required to give notice to interested persons unless they have waived notice or consented to the proposed action.) The independent administration authority will be granted unless an interested person files an objection to the petition and shows good cause why the court should not grant the authority.

A HEARING on the petition will be held on September 2, 2021 at 9:01 a.m. in Dept.: 13 of the Superior Court of California, County of Santa Clara, located at 191 N. First St., San Jose, CA, 95113.

If you object to the granting of the petition, you should appear at the hearing and state your objections or file written objections with the court before the hearing. Your appearance may be in person or by your attorney.

If you are a creditor or a contingent creditor of the decedent, you must file your claim with the court and mail a copy to the personal representative appointed by the court within the later of either (1) four months from the date of first issuance of letters to a general personal representative, as defined in section 58 (b) of the California Probate Code, or (2) 60 days from the date of mailing or personal delivery to you of a notice under section 9052 of the California Probate Code. Other California statutes and legal authority may affect your rights as a creditor. You may want to consult with an attorney knowledgeable in California law. You may examine the file kept by the court. If you are a person interested in the estate, you may file with the court a Request for Special Notice (form DE-154) of the filing of an inventory and appraisal of estate assets or of any petition or account as provided in Probate Code section 1250. A Request for Special Notice form is available from the court clerk.

Attorney for Petitioner:
Kristi S. Gerrior, Esq.
1901 S. Bascom Avenue, Suite 1240
Campbell, CA 95008
(650) 625-1477
(PAW July 2, 9, 16, 2021)

Call 650-223-6578 or email asantillan@pawebly.com for legal advertising.



156 Lowell Avenue, Palo Alto



Classic & Timeless Elegance in Old Palo Alto

4

BEDS

3.5

BATHS

3,570

INTERIOR SQ. FT.

\$5,995,000

156Lowell.com

4 bedrooms, dedicated office, and 3.5 baths

Timeless design with fresh finishes throughout, fine hardwood floors

Bright eat-in kitchen with French doors to the rear yard

Elevator; fully handicap-accessible upstairs primary suite

Large rear yard with patio, low-maintenance gardens, vegetable beds

2-car garage

Approximately 7,500-square-foot lot

Excellent Palo Alto schools



CITRON

Judy Citron

650.400.8424

judy@judycitron.com

judycitron.com

DRE 01825569

#1 Agent ENTIRE Bay Area

#5 Agent California

#21 Agent Nationwide

COMPASS