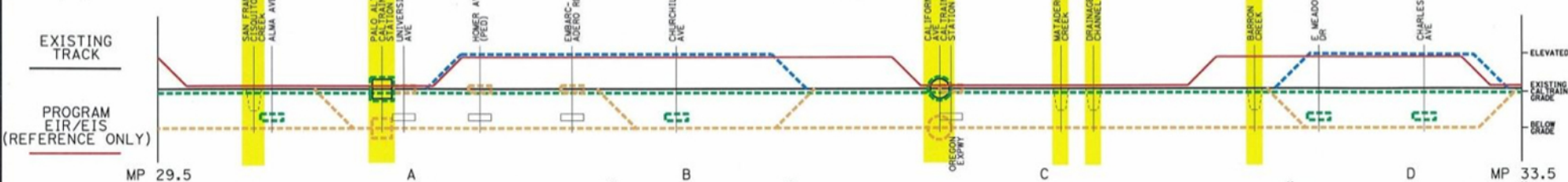
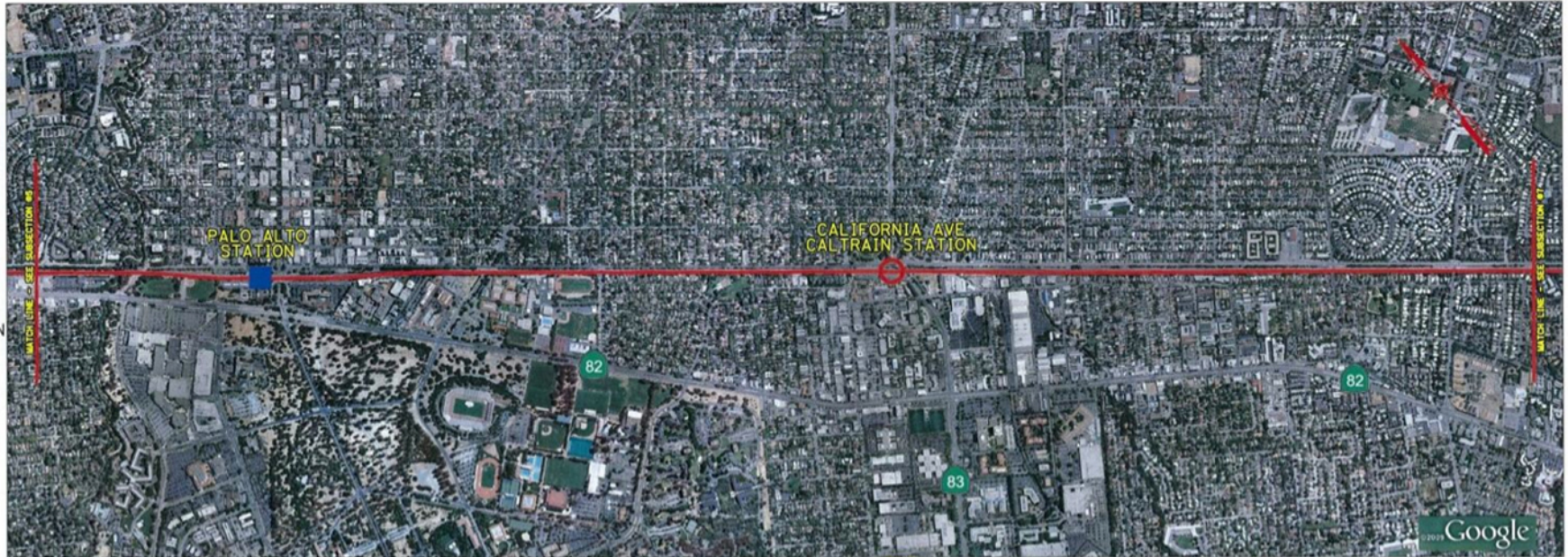


Subsection #6

Length: 4.0 miles Land Use: Urban

North of SCL/SM County Line to North of Adobe Creek (MP. 29.5 to MP. 33.53)

This subsection is located in the City of Palo Alto. The Caltrain tracks are at-grade and all of the streets that are grade separated pass under the tracks. Several at-grade crossings occur between the grade separations. Alma Street runs alongside the Caltrain tracks for the entire length of this subsection.



San Francisco - San Jose
 DRAFT Preliminary Alternatives Discussion
 September 25, 2009

NOT TO SCALE

